

# SENSORTEC Fleet Management System

This file provides a comprehensive overview of SensorTec Fleet Management System. You will have an exclusive insight on the hardware units, the embedded Artificial Intelligence and the advanced display technology, which together result in a complete solution that determine the future of video surveillance.



# SECURITY BEYOND LIMITS

In the few years since 2000, SensorTec has grown into an international company that it is today. We are among the most innovative technological companies in the world, manufacturing and developing intelligent security and surveillance solutions specifically for largescale projects for military, law enforcement, public authorities and private sectors.

We believe that serving the needs of our clients efficiently can only be achieved by delivering complete solutions. In order to achieve that, we design and manufacture all the critical components of our systems, including hardware, software and embedded computer vision. Our entire product range is manufactured and developed in accordance with the highest quality requirements.

## KEY FIGURES

**300+****TECHNICAL SUPPORT ENGINEER AND TECHNICIAN****4****BRANCHE OFFICES****HQ and Manufacturing Facilities:**

Cambridgeshire, UK.

Budapest, Hungary.

**Sales and Technical Support Offices:**

Dubai, UAE.

Riyadh, KSA.

SensorTec provides integrated solutions, which combine a wide range of devices, sensors, and software, such as surveillance cameras, surveillance radars, video analytic software and C3. All of our solutions are designed to work in harmony and provide a comprehensive multi-layer approach to deliver situation awareness and interactive intelligence.



# END-TO-END SENSORTEC SOLUTIONS



Borders  
Video Surveillance



Airports  
Video Surveillance



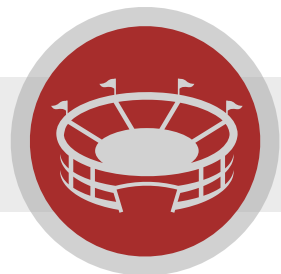
Seaports  
Video Surveillance



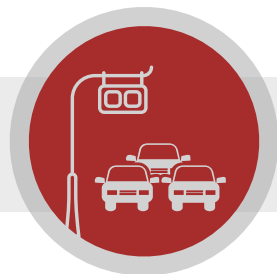
Critical Infrastructure  
Video Surveillance



Safe & Smart City  
Video Surveillance



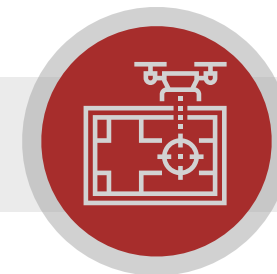
Stadiums & Crowds  
Video Surveillance



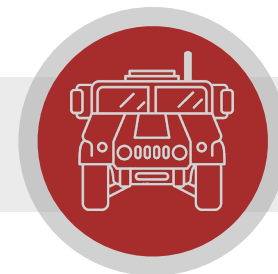
Traffic Management  
& Violations Detection



Highway  
Video Surveillance



Anti-Drone/UAV  
Intelligent System



Mobile (In-Vehicle)  
Video Surveillance

# SELECTED INTERNATIONAL REFERENCES

## **BORDERS SURVEILLANCE AND SECURITY**

Hungarian Land Borders - Hungary.  
 Egyptian Land and Sea Borders - Egypt.  
 Kuwaiti Land and Sea Borders - Kuwait.

## **AIRPORTS SURVEILLANCE AND SECURITY**

LaGuardia Airport - New York.  
 Hungarian Airport - Hungary.  
 Mumbai Airport - India.  
 Turkish Airport - Turkey.  
 Alexandria Airport - Egypt.

## **SEAPORTS SURVEILLANCE AND SECURITY**

Hungarian Waterway - Hungary.  
 Sea Ports - Kuwait.  
 Sea Port - UAE.

## **CRITICAL INFRASTRUCTURE SECURITY**

Ministry of Defense - Egypt.  
 Egyptian Monument Authorities - Egypt.  
 Manarat Al Saadiat Cultural Museum - UAE.  
 Private Palace - Kuwait.  
 Saudi Arabia Embassy - Geneva.

## **CITY SURVEILLANCE AND SECURITY**

Delhi City - India.  
 Luxor City - Egypt.  
 Sharm El Sheikh City - Egypt.  
 Cairo City - Egypt.  
 Port Saeed City - Egypt.

## **STADIUMS AND CROWDS SURVEILLANCE**

Manchester City Stadium - UK.  
 Budapest Szusza Ferenc Stadium - Hungary.  
 Rijeka Stadium - Croatia.  
 Beşiktaş Stadium - Turkey.  
 Atatürk Olympic Stadium - Turkey.  
 Fenerbahçe Şükrü Saracoğlu Stadium - Turkey.  
 Luzhniki Stadium Moscow - Russia.  
 Spartak Moscow - Russia.  
 Mecca Religious Sites - KSA.  
 Dubai Festival Plaza - UAE.  
 Pyramids Touristic Area - Egypt.

## **TRAFFIC LAW ENFORCEMENT**

Traffic Management And Violation Detection - Cairo, Egypt.  
 Traffic Management And Violation Detection - Kuwait.  
 Traffic Management - Armenia.  
 Traffic Management - Hungary.

# All-in-one Video Surveillance Fleet Management Solution



Establishing a fleet management system is crucial for companies to safeguard their assets. With an intuitive and user-friendly interface, managers can monitor vehicle images and driving conditions in real time, analyze recorded data, enhance driving safety, reduce accident costs, and improve overall operational management.



Driving behavior management is not easy



Operational challenges for managers

		LAST POSITION	
03	Mazda 3	Location	CDD
03		Mileage	57
	Operational Car	Date	8-Jan-16
	Available	Driver	John Doe

...ed information in white cells above  
...daily car trip information in table below

	Category	Starting Place	Destination
16	Operational	Office	Branch
16	Operational	Branch	Office
16	Refueling		Town Station
16	Operational	Office	Branch 2
16	Expenses		Highway
16	Expenses		Branch 2
16	Operational	Branch 2	Office
16	Business	Office	CDD Company
16	Refueling		CHH Station

Vehicle information cannot be controlled

TAILORED TO YOUR NEEDS

# SENORTEC Fleet Management System



Automatically upload images to a dedicated Server or your company's cloud space, and store them in a highly secure enterprise-level data center. It can be used without additional installation. Relevant personnel do not need to maintain and troubleshoot the server. Updates will be made. Automatically sync to your system and immediately benefit from new features that make your images fully supported.



**Image  
Management**



**GPS  
Tracking**



**Electronic  
Fence**



**Route  
Planning**



**Driving  
Behavior**



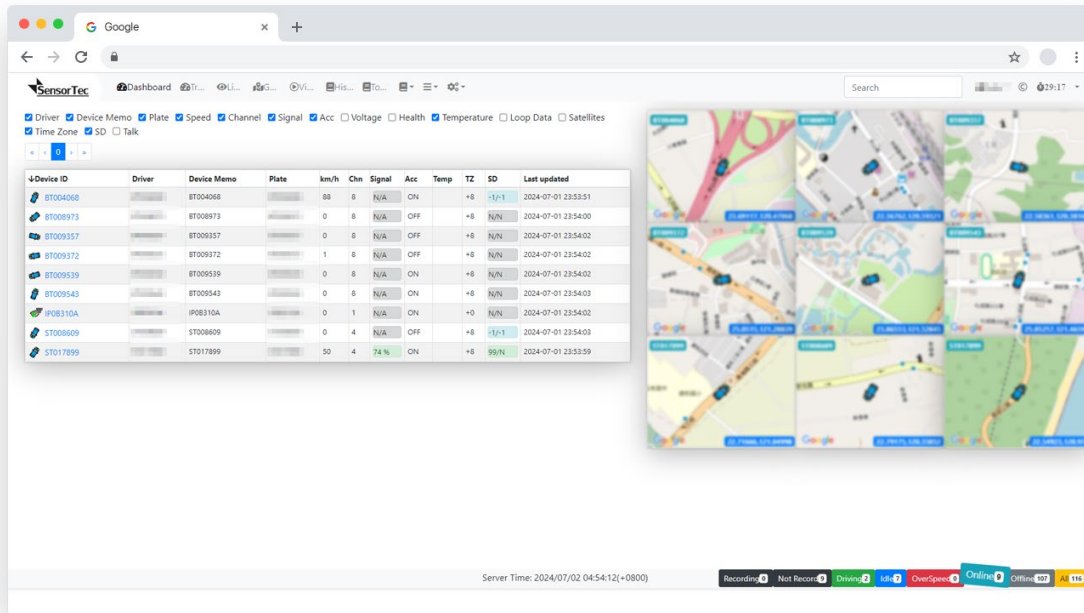
**Alarm  
Management**



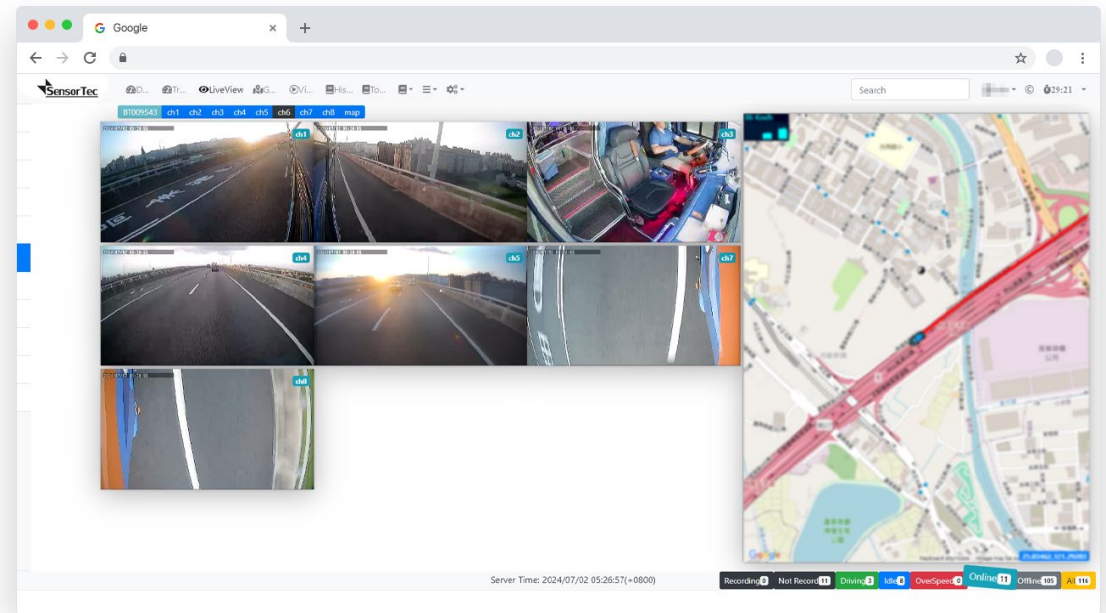
# STFMS BENEFITS



Manage a large number of devices simultaneously  
 Manage more than 5,000 cameras simultaneously and maintain high-quality video playback.



Web page Live View without delay  
 Video playback delay is within 0.5 seconds, with two-way voice function, and the image can be adjusted in real time.

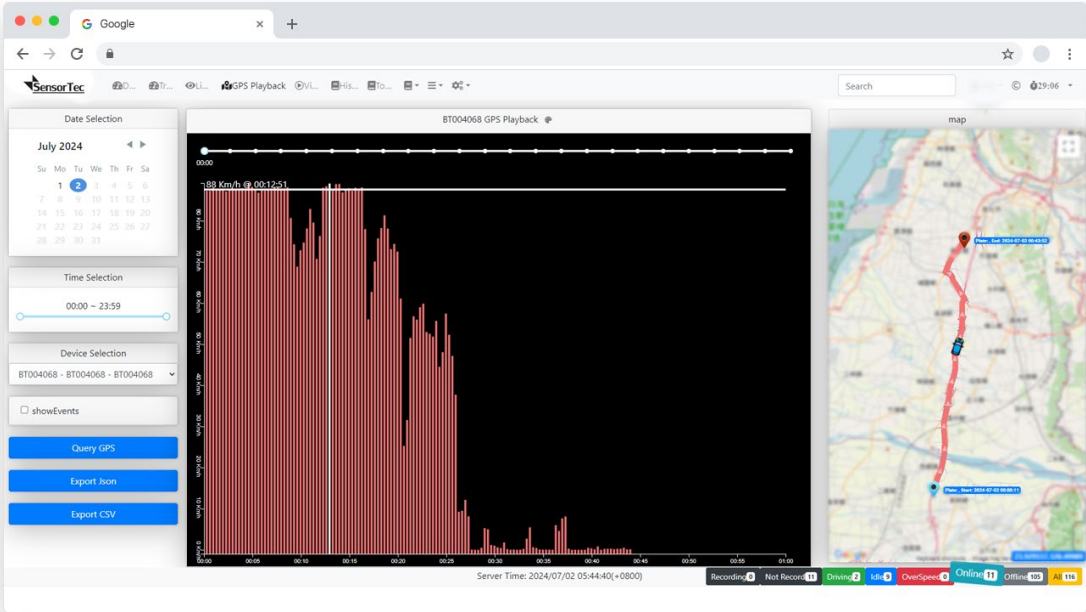


# STFMS BENEFITS



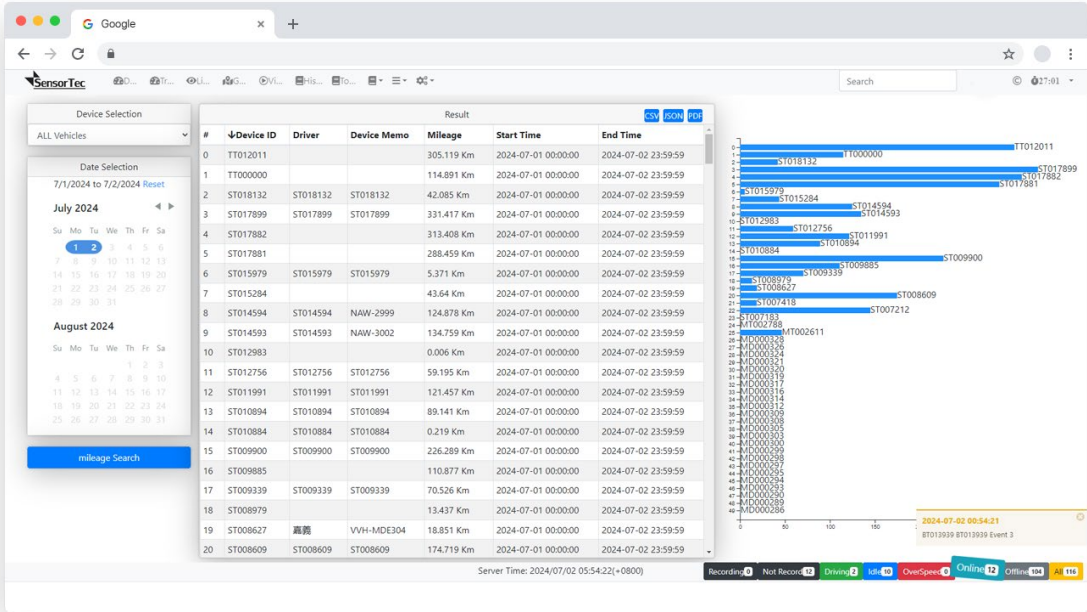
### GPS Playback

Querying GPS data is incredibly simple, allowing managers to check vehicle speed at any moment from start to finish of a trip. This data is seamlessly presented on a map, providing real-time insights and detailed trip analysis. This intuitive visualization offers managers a comprehensive view of fleet performance and driver behavior.



### Effortless data collection and monitoring

Querying data on the total mileage of the fleet is straightforward and efficient. The system's user-friendly interface allows for seamless monitoring of all data, which is neatly categorized for easy readability. This organized structure ensures that managers can quickly access and analyze essential information without hassle.





# STFMS BENEFITS

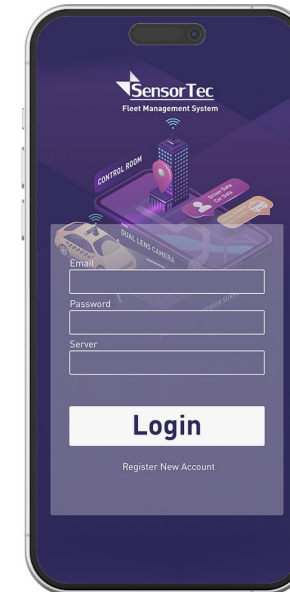


Combined with intelligent AI image analysis and Event analysis Easily manage fixed-point data for people and vehicles entering and exiting, combined with image information, to effectively enhance management efficiency, expedite problem-solving, and reduce costs. This includes systems like face recognition, people flow recognition, and vehicle recognition.



Anywhere access from multiple devices Access secure and fast image management from anywhere. Simply log in to your account to view real-time data and playback video from any device. SensorTec provides Mobile App to easily access the FMS server from anywhere, or access each device directly.

Source	↑UID	Event Time	Notify	Event Name	Device ID	Vehicle ID	Plate	Try	ok	Memo	Fence	Km/h	Update Time	Video	Photo	DJ	FB
Recover	16379969	2024-07-01 20:12:34	Lane Departure	LANE	ST015979	ST015979	0 0	LANE-50			1		2024-07-01 20:18:27				
Recover	16379643	2024-07-01 18:00:10	Forward Proximity	FCW1	ST015979	ST015979	0 0	FCW1:50			31		2024-07-01 18:13:59				
Recover	16379642	2024-07-01 17:59:59	Forward Proximity	FCW1	ST015979	ST015979	0 0	FCW1:50			34		2024-07-01 18:13:59				
Recover	16379641	2024-07-01 17:59:49	Forward Proximity	FCW1	ST015979	ST015979	0 0	FCW1:50			34		2024-07-01 18:13:59				
Recover	16379640	2024-07-01 17:59:28	Forward Proximity	FCW1	ST015979	ST015979	0 0	FCW1:50			31		2024-07-01 18:13:59				
Recover	16379633	2024-07-01 17:58:49	Forward Proximity	FCW1	ST015979	ST015979	0 0	FCW1:31			32		2024-07-01 17:59:19				
Recover	16379632	2024-07-01 17:57:57	Forward Proximity	FCW1	ST015979	ST015979	0 0	FCW1:50			37		2024-07-01 17:59:19				
Recover	16379631	2024-07-01 17:57:46	Forward Proximity	FCW1	ST015979	ST015979	0 0	FCW1:50			36		2024-07-01 17:59:19				
Recover	16379630	2024-07-01 17:57:35	Forward Proximity	FCW1	ST015979	ST015979	0 0	FCW1:50			31		2024-07-01 17:59:19				
Recover	16379629	2024-07-01 17:57:05	Forward Proximity	FCW1	ST015979	ST015979	0 0	FCW1:50			26		2024-07-01 17:59:19				
Recover	16379628	2024-07-01 17:56:54	Forward Proximity	FCW1	ST015979	ST015979	0 0	FCW1:50			16		2024-07-01 17:59:19				
Recover	16379626	2024-07-01 17:54:13	Forward Proximity	FCW1	ST015979	ST015979	0 0	FCW1:50			0		2024-07-01 17:59:19				
Recover	16379624	2024-07-01 17:42:26	Forward Proximity	FCW1	ST015979	ST015979	0 0	FCW1:50			22		2024-07-01 17:59:19				
Recover	16379568	2024-07-01 17:02:21	Lane Departure	LANE	ST015979	ST015979	0 0	LANE:50			19		2024-07-01 17:02:24				
Recover	16379456	2024-07-01 15:45:13	Forward Proximity	FCW1	ST015979	ST015979	0 0	FCW1:50			10		2024-07-01 16:25:16				
Recover	16379346	2024-07-01 15:05:15	Forward Proximity	FCW1	ST015979	ST015979	0 0	FCW1:50			10		2024-07-01 15:17:26				
Recover	16379345	2024-07-01 14:51:07	Forward Proximity	FCW1	ST015979	ST015979	0 0	FCW1:50			6		2024-07-01 15:17:26				
Recover	16379343	2024-07-01 14:42:36	Forward Proximity	FCW1	ST015979	ST015979	0 0	FCW1:50			1		2024-07-01 15:17:26				
Recover	16379342	2024-07-01 14:43:25	Forward Proximity	FCW1	ST015979	ST015979	0 0	FCW1:50			13		2024-07-01 15:17:26				
Recover	16379305	2024-07-01 14:32:20	Forward Proximity	FCW1	ST015979	ST015979	0 0	FCW1:50			8		2024-07-01 14:43:09				



# PRODUCT FEATURES

- Smart video processor, which combines high-quality graphics and AI-enhanced elasticity.
- Built-in Road-facing and Cabin-facing FHD camera, and supports an optional extra FHD Camera.
- Supports 4G with external antenna and WiFi connectivity.
- Integrates with SensorTec Fleet Management System to enable the remote management of Fleet/Vehicle with real-time video, location, driving condition, collision event.
- Combined with USB, RS232, and alarm I/O connector, supporting integration with abundant in-vehicle systems. (optional)
- Built-in speaker and microphone to enable audio recording and two-way IP voice communication.
- Supports programmable setting on delay recording.
- Supports programmable setting on ACC-Off recording for parking mode application. (optional)



# FEATURES

## Connectivity

Featuring a 4G modem for continuous connectivity, our system integrates with STFMS to provide real-time video viewing and remote playback capabilities. Additionally, it is equipped with a Wifi4 module, enabling direct connectivity through a mobile app for comprehensive control and monitoring.

With the help of GPS, we can monitor all connected vehicles in real-time through the STFMS, allowing for detailed tracking of routes and tracks.



# FEATURES

## Monitoring

The system incorporates two sensors: built-in road-facing and cabin-facing cameras, both capable of up to 1080P/30fps. These cameras use the Sony StarVis IMX307 sensor with fields of view (FOV) of 120°/105°/55° for the road-facing camera and ~150°/125°/65° for the cabin-facing camera. Additionally, the system includes an IR LED for cabin illumination during night mode operation.

### ROAD-FACING WIDE FOV CAMERA



### CABIN-FACING WIDE FOV CAMERA



### CABIN-FACING WIDE FOV CAMERA NIGHT OPERATION





# CONTACT US



## SensorTec Security Systems

[www.sensortec-eu.com](http://www.sensortec-eu.com) | [sales@sensortec-eu.com](mailto:sales@sensortec-eu.com)



### SensorTec UK

Sydney House,  
62 Lancaster Way, Ely,  
Cambridgeshire, UK.  
+44 1353 523549

### SensorTec UAE

701 Thuraya Tower 1,  
Dubai Internet City,  
Dubai, UAE.  
+971 4 367 0351 | +971 50 496 1750

### SensorTec KSA

Prince Muhammad Ibn Saad  
Ibn Abdulaziz Rd,  
Riyadh, KSA.  
+966 53 222 2848