



SENSORTEC COMPANY PROFILE

SECURITY BEYOND LIMITS



In the few years since 2000, SensorTec has grown into an international company that it is today. We are among the most innovative technological companies in the world, manufacturing and developing intelligent security and surveillance solutions specifically for largescale projects for military, law enforcement, public authorities and private sectors.

We believe that serving the needs of our clients efficiently can only be achieved by delivering complete solutions. In order to achieve that, we design and manufacture all the critical components of our systems, including hardware, software and embedded computer vision. Our entire product range is manufactured and developed in accordance with the highest quality requirements.

KEY FIGURES

300+	TECHNICAL SUPPORT ENGINEER AND TECHNICIAN
4	BRANCHE OFFICES HQ and Manufacturing Facilities: Cambridgeshire, UK. Budapest, Hungary. Sales and Technical Support Offices: Dubai, UAE. Riyadh, KSA.

SensorTec provides integrated solutions, which combine a wide range of devices, sensors, and software, such as surveillance cameras, surveillance radars, video analytic software and C3. All of our solutions are designed to work in harmony and provide a comprehensive multi-layer approach to deliver situation awareness and interactive intelligence.



END-TO-END SENORTEC SOLUTIONS



Borders
Video Surveillance



Airports
Video Surveillance



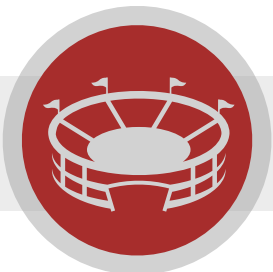
Seaports
Video Surveillance



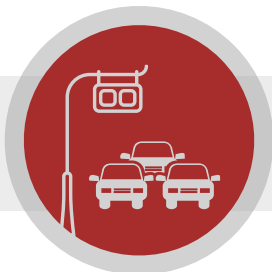
Critical Infrastructure
Video Surveillance



Safe & Smart City
Video Surveillance



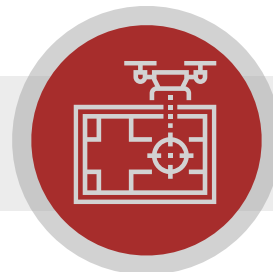
Stadiums & Crowds
Video Surveillance



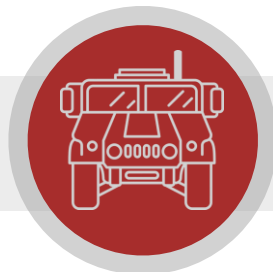
Traffic Management
& Violations Detection



Highway
Video Surveillance



Anti-Drone/UAV
Intelligent System



Mobile (In-Vehicle)
Video Surveillance

”

DON'T SETTLE FOR A PRE-BUILT SOLUTION THAT ISN'T OPTIMIZED FOR YOUR NEEDS

In SensorTec, We Design each of our High-End Solutions for Maximum Effectiveness Based on your Budget and Project Requirements.



SELECTED INTERNATIONAL REFERENCES

BORDERS SURVEILLANCE AND SECURITY

Hungarian Land Borders - Hungary.
Egyptian Land and Sea Borders - Egypt.
Kuwaiti Land and Sea Borders - Kuwait.

AIRPORTS SURVEILLANCE AND SECURITY

LaGuardia Airport - New York.
Hungarian Airport - Hungary.
Mumbai Airport - India.
Turkish Airport - Turkey.
Alexandria Airport - Egypt.

SEAPORTS SURVEILLANCE AND SECURITY

Hungarian Waterway - Hungary.
Sea Ports - Kuwait.
Sea Port - UAE.

CRITICAL INFRASTRUCTURE SECURITY

Ministry of Defense - Egypt.
Egyptian Monument Authorities - Egypt.
Manarat Al Saadiat Cultural Museum - UAE.
Private Palace - Kuwait.
Saudi Arabia Embassy - Geneva.

CITY SURVEILLANCE AND SECURITY

Delhi City - India.
Luxor City - Egypt.
Sharm El Sheikh City - Egypt.
Cairo City - Egypt.
Port Saeed City - Egypt.

STADIUMS AND CROWDS SURVEILLANCE

Manchester City Stadium - UK.
Budapest Szusza Ferenc Stadium - Hungary.
Rijeka Stadium - Croatia.
Beşiktaş Stadium - Turkey.
Atatürk Olympic Stadium - Turkey.
Fenerbahçe Şükrü Saracoğlu Stadium - Turkey.
Luzhniki Stadium Moscow - Russia.
Spartak Moscow - Russia.
Mecca Religious Sites - KSA.
Dubai Festival Plaza - UAE.
Pyramids Touristic Area - Egypt.

TRAFFIC LAW ENFORCEMENT

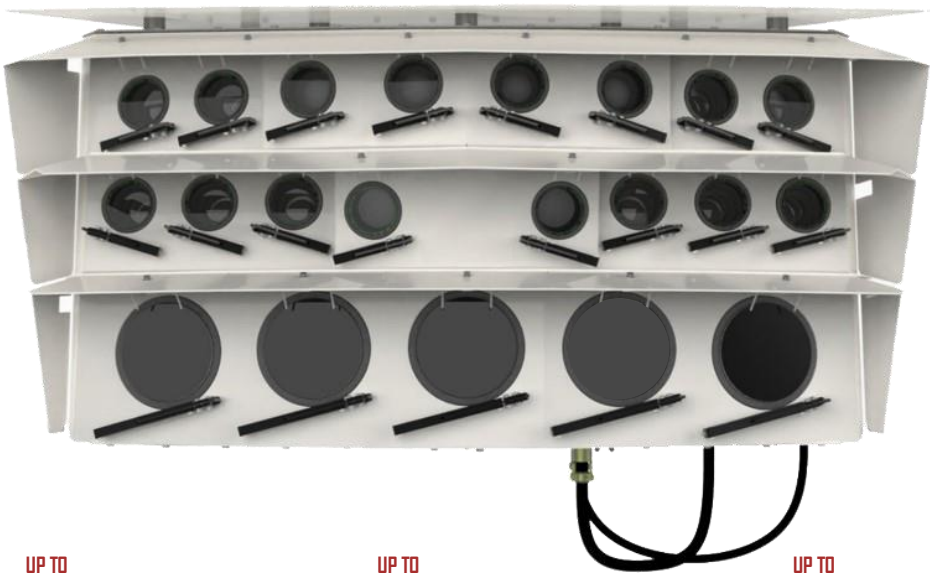
Traffic Management And Violation Detection - Cairo, Egypt.
Traffic Management And Violation Detection - Kuwait.
Traffic Management - Armenia.
Traffic Management - Hungary.

PIONEERING TECHNOLOGIES BEHIND SENSORTEC INTELLIGENT SOLUTIONS

SENSORTEC PANORAMIC TECHNOLOGY

SensorTec developed a leading-edge multi-sensor panoramic technology to effectively monitor large scale areas using few panoramic cameras, providing 200-960MP image resolutions with 20fps video stream. Thanks to our panoramic display technology that makes it possible to seamlessly utilize the full resolution during monitoring.

We developed a unique stitching technology that geometrically merges images at the image borders resulting in a contiguous panoramic image just as if it were taken by a single sensor camera. All the grouped sensors take their images synchronized, which ensures a glitch free display throughout the whole panoramic image. Thanks to the special stitching technology zooming and panning are seamless at the stitching borders as too.



UP TO
960MP
RESOLUTION

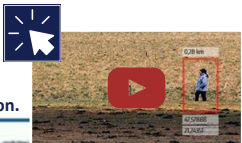
UP TO
180DEG
FIELD OF VIEW

UP TO
6.0KM
COVERAGE

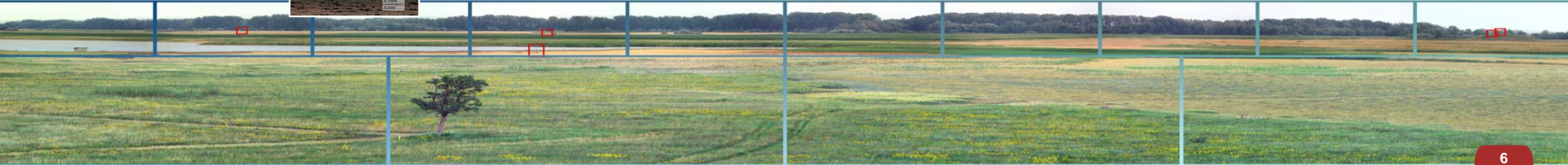
DUAL
VISION

RUGGED
CONSTRUCTION

AI
POWERED



Click to watch the video
Panoramic Technology - Automatic Target Detection.



PIONEERING TECHNOLOGIES BEHIND SENSORTEC INTELLIGENT SOLUTIONS

SENSORTEC LONG-RANGE MULTI-SENSOR TECHNOLOGY

SensorTec provides a leading-edge fully customized multi-sensor cameras employing the longest range visible day/night zoom cameras and the latest focal plane array technology for cooled or uncooled thermal infrared cameras to meet long-range surveillance and target identification requirements.

All our multi-sensors are modular, allow the client to select the combination of payloads they need for their specific application. Configuration of every multi-sensor is tailored to requirements of the specific project and the environment in which it will be used (fixed, portable, vehicle mounted, ...).

SensorTec multi-sensor systems provide a wide range of digital image enhancements to meet different requirements based on the application and the environment. They are equipped with fog filter allowing clearer long-range imaging during the day time. Fog filters isolate the effects of smoke, haze and light fog, producing an image with better contrast and less distortion.

SensorTec multi-sensor cameras are compatible for integration with other SensorTec systems as well as 3rd party systems and payloads.

MWIR COOLED

26Km

Vehicle Detection

LWIR UNCOOLED

17Km

Vehicle Detection

SWIR UNCOOLED

35Km

Vehicle Detection

VISIBLE LIGHT

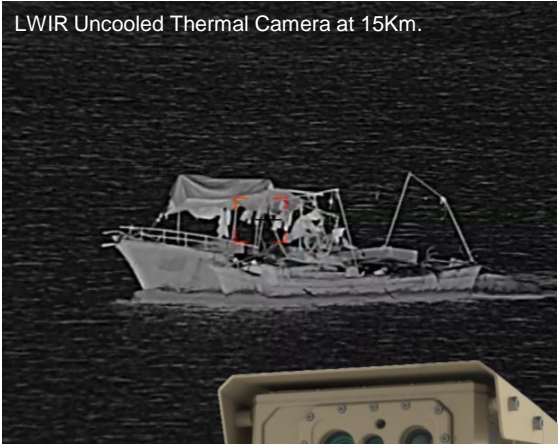
10Km

Vehicle Detection

The value depends on the selected detector and cooler.



Click to watch the video
Multi-Sensor Camera - Long Range Detection.



PIONEERING TECHNOLOGIES BEHIND SENSORTEC INTELLIGENT SOLUTIONS

SENSOR FUSION TECHNOLOGY

SensorTec developed a specific data level sensor fusion technology, which realizes aggregated raw data analysis for the most accurate automatic detection and tracking possible. The AI algorithm works with uncompressed data that are delivered from different types of data sources. This way our systems are able to overcome the limitations of individual sensors and provide more reliable information of the monitored area and the objects within.

Besides, we are able to efficiently integrate 3rd party sensors and combine their capabilities with our sensors.



PIONEERING TECHNOLOGIES

BEHIND SENSORTEC INTELLIGENT SOLUTIONS



SENSORTEC AI-POWERED VIDEO CONTENT ANALYSIS

Artificial Intelligence is gaining more and more ground in video surveillance these days. SensorTec creates high-end systems that relies on not just extreme high resolutions, but advanced computer vision technologies.



Having an extremely high-resolution video of a vast area is just the first step in making video surveillance more effective. We realized the potential in computer vision technologies, wherewith we were able to upgrade the security and video surveillance in many industries.

We developed embedded Video Content Analysis algorithms considering the specific tasks of different application areas. As the video content is analyzed as close to the image sensor as possible, resolution reduction or software-based visual enhancement algorithms do not disturb the calculations. High-resolution panoramic images and accurate VCA together create a powerful combination that provides reliable automatism in video technology.

	AIRPORT	BORDER	CRITICAL INFRASTRUCTURE	SAFE & SMART CITY
Object Detection	+	+	+	+
Object Tracking	+	+	+	+
Object Classification	+	+	+	+
Geofencing	+	+	+	+
Virtual Fence	+	+	+	+
Collision Prediction	+	Not relevant	+	Not relevant
Proximity Alert	+	Not relevant	+	Not relevant
FOD Detection	+	Not relevant	+	Not relevant
Traffic Enforcement	+	Not relevant	+	+
Object History	+	+	+	+



DESIGNING YOUR PROJECT



3D MODEL OF VISUAL COVERAGE

SensorTec starts each project with a customized 3D plan, which helps optimize camera arrangement, the necessary resolution and coverage according to client needs.



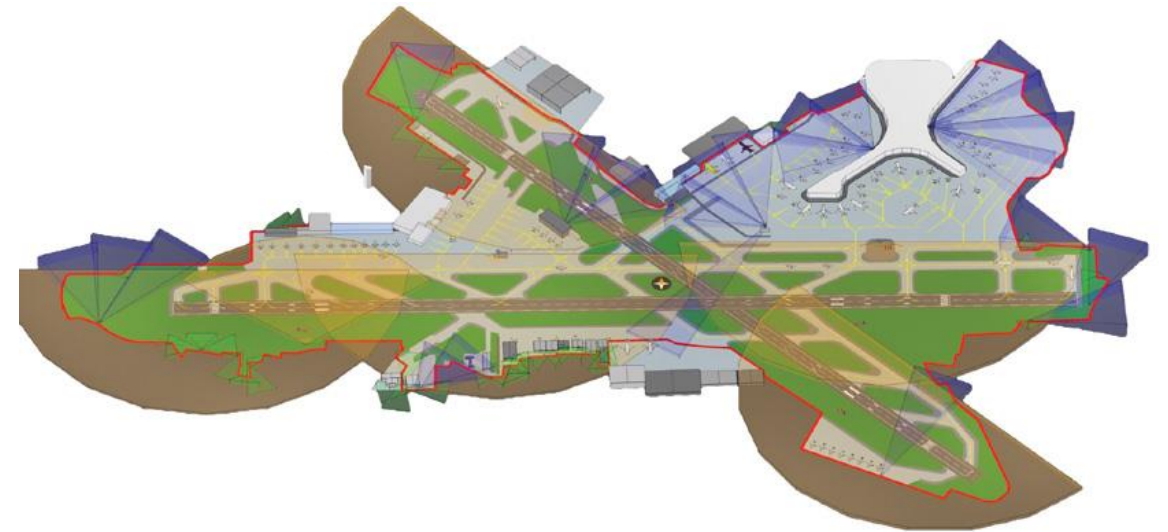
ADAPTABLE SYSTEM STRUCTURE

We always consider the site specific structure and characteristics to best adapt the system for the current project. Moreover, SensorTec solutions have a flexible hardware structure that can be easily rearranged in case of future project developments.



SYSTEM EXTENSION

SensorTec solutions are designed to be flexible for future developments. Both the covered areas and also system functionality can be extended easily on demand.



[Click to watch the video](#)
Airports Solutions - Model of Visual Coverage.



”

SENSORTEC INTELLIGENT SOLUTIONS

SENORTEC INTELLIGENT SOLUTIONS

FINANCIAL BENEFITS



REDUCED INFRASTRUCTURE COST

Only few cameras are needed to cover vast areas, as a result no need to install numerous poles. The network infrastructure is far less complex and cabling is also fast and easy.



LONG LIFETIME

SensorTec leading-edge technologies ensure the system avoids both physical and technological obsolescence for a long time.



UNINTERRUPTED OPERATION

SensorTec provides uninterrupted system availability as all their components are developed to operate with high MTBF.



DESIGNED TO LAST

SensorTec systems can withstand intense weather conditions with military specs and built-in heating and cooling systems.



NO NEED FOR FREQUENT MAINTENANCE

SensorTec hardware components are capable of self maintenance, thanks to their built-in self-cleaning and deicing systems.



LOW RUNNING COST, REMOTE MAINTENANCE

Beside standard maintenance, which is well-planned and organized for all system components, SensorTec provides remote maintenance as well. The system constantly gives feedback on the condition of the cameras and other components. By exploring early warnings, failures can be prevented.



LESS MANPOWER

As vast areas can be monitored with much fewer cameras that provides far better spatial orientation for viewers and also VCA based Real-Time Decision Making Support, far less operators are needed for efficient surveillance.



SENSORTEC BORDERS SOLUTIONS



SensorTec offers a wide range of borders solutions to monitor vast border sections, whether they are land or water, and cover the surrounding area within a range of several kilometers.

SensorTec provides automatic target detection, classification and tracking using a specifically developed sensor fusion technology, which involves various types of surveillance sensors. With Real-time Decision Making Support, the system helps operators quickly react to threats like smuggling, terrorism and illegal immigration.

Our borders surveillance solutions adapt to different environmental conditions, it can act as a much more effective alternative to fences but also strengthens existing ones.

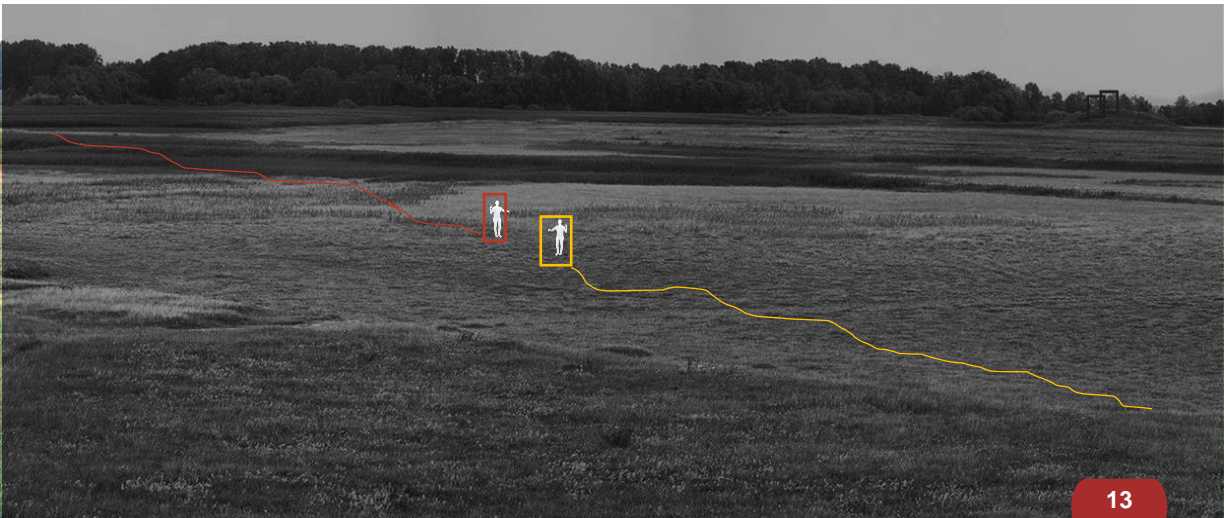
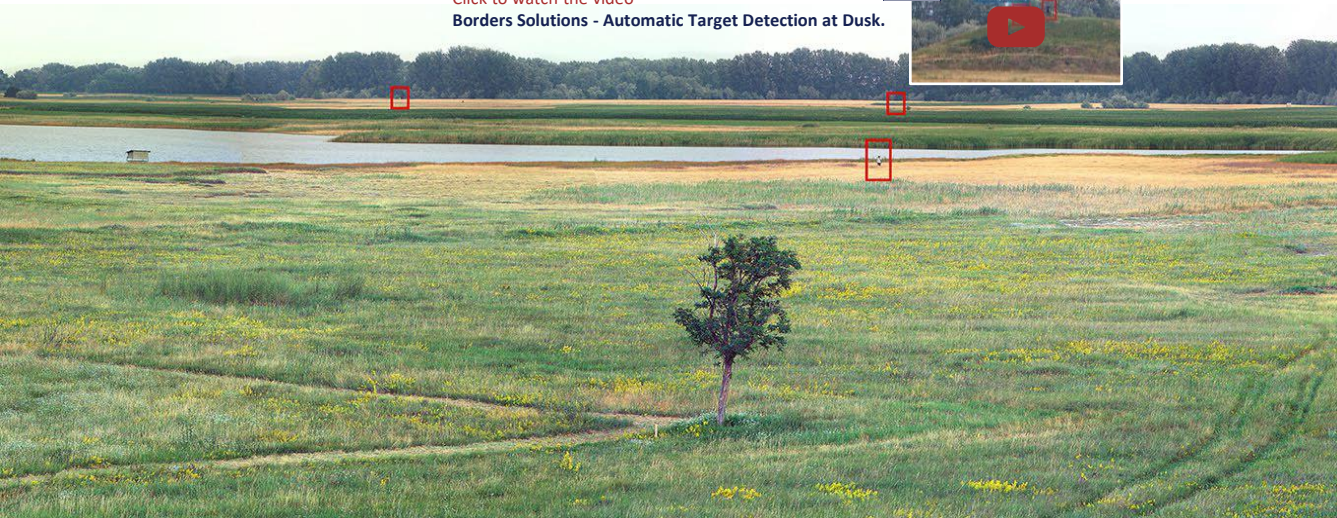


Human Detection up to 21.0Km.



Vehicle Detection up to 27.0Km.

[Click to watch the video](#)
Borders Solutions - Automatic Target Detection at Dusk.



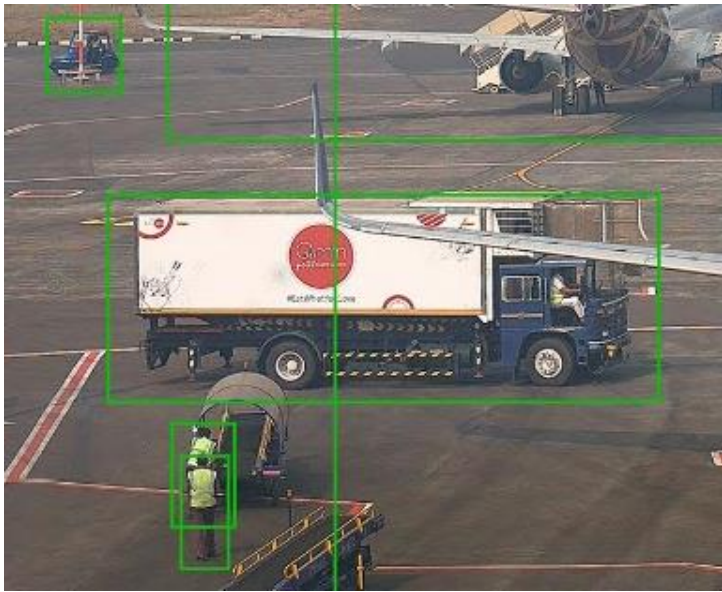
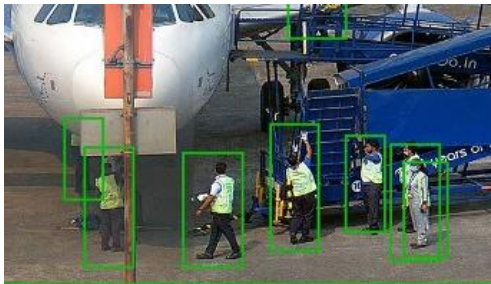
SENORTEC AIRPORTS SOLUTIONS



SensorTec developed the best-in-class airport video monitoring solution that comprises high-end visual sensors, intelligent data processing units and a complete software package. It aids airport services by Computer Vision Technologies and supplement the scene for operators with informational augmented reality elements.

The solution facilitates airports operations and prepares airports to conveniently face pressing new directives. It ensures smooth and secure ground processes and turnarounds, and plays a key role in preventing incidents and also in investigation. As a result, it enhances airport efficiency, reduces the number of costly delays, and even shortens the system’s payback period.

SensorTec airport solution is a trusted system that has been chosen already by some of the largest airports around the globe, preparing their airports for the difficulties of the new challenging era.



Click to watch the video
Airports Solutions - New York Airport.



SensorTec 180° 200MP Panoramic Camera - 70% of the full image.

SENSORTEC SEAPORTS SOLUTIONS



SensorTec provides intelligent seaports solutions that able to monitor an entire seaport area with enormous resolution. It automatically detects, classifies and tracks objects above and under the water and guides the attention of operators to handle maritime and ground processes on the port more efficiently.

Monitor: comprehensive monitoring and control of seaport areas like territorial waters, under water, ground areas and collect and process data to create common operational pictures.

Alert: Detection and prevention of illegal activities such as underwater cables or pipelines vandalism, piracy, terrorism, smuggling, drug trafficking, illegal fishing and unauthorized access to protected areas. Also, analyze traffic, detect hazards and increase situational awareness.

Respond: Advanced decision making supports and communication.

Operational Efficacy: Data is stored for historical trends analysis, while full all-component redundancy provides continuous operations.



Automatic Number Plate Recognition at 300m.



Automatic Thermal Tracking at 20Km.



Click to watch the video
Seaports Solutions - Panoramic Coverage.



SENSORTEC CRITICAL INFRASTRUCTURE SOLUTIONS

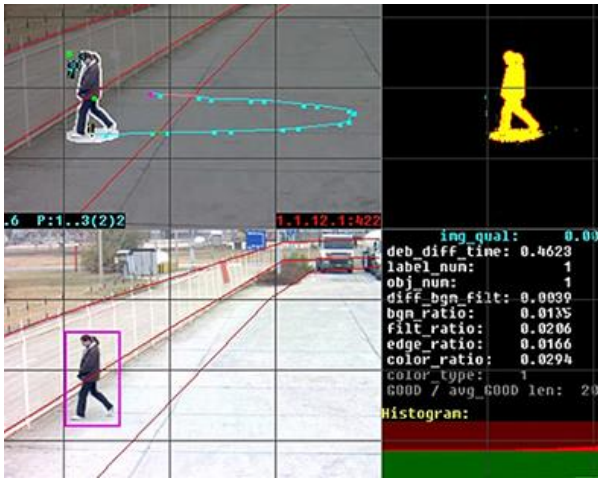


Our solution is developed to efficiently protect critical infrastructure sites, such as nuclear and power plants, oil refineries, ports and other industrial facilities from perimeter intrusions and internal threats.

SensorTec intelligent Video Content Analysis (VCA) and Real-time Decision Making Support (RTDMS) ensure a safer environment and smooth infrastructure operation. They help minimize false alarm rates and also increase situational awareness.

SensorTec offers a multi-sensor solution, which provides the best-in-class visible light and thermal video surveillance with built-in intelligence, have a fused radar system, and is also able to integrate various 3rd party sensors.

Our solutions are able to track all detected objects, whether they are intruders or authorized people or vehicles within the monitored area. Even if they move between camera images, the fused VCA and the RDA accurately follow and record their paths in the images. The algorithm is able to track 2500 objects at the same time.



[Click to watch the video](#)
Critical Infrastructure Solutions - Industrial Port Surveillance.



SENSORTEC SAFE & SMART CITY SOLUTIONS



SensorTec Safe and Smart City Solutions provide intelligent city video surveillance. They are able to efficiently surveil large-scale areas 24/7 and help cities maintain security on their streets. Thanks to real-time information sharing, operators can react quickly on any suspicious activity and proper authorities can take efficient security measures. All violent and criminal activities are captured on high-resolution security footage, wherein face recognition is possible even at far distances. These recordings can be used as irrefutable visual evidences on demand.

The other goal of our solutions is to help maintain security in everyday traffic by accurately detecting and recording several types of traffic violations and providing irrefutable evidences for local authorities. As drivers know that all their violating actions could be captured, they are more likely to comply with traffic rules.



[Click to watch the video](#)
City Surveillance in Crowds - Panoramic Camera.

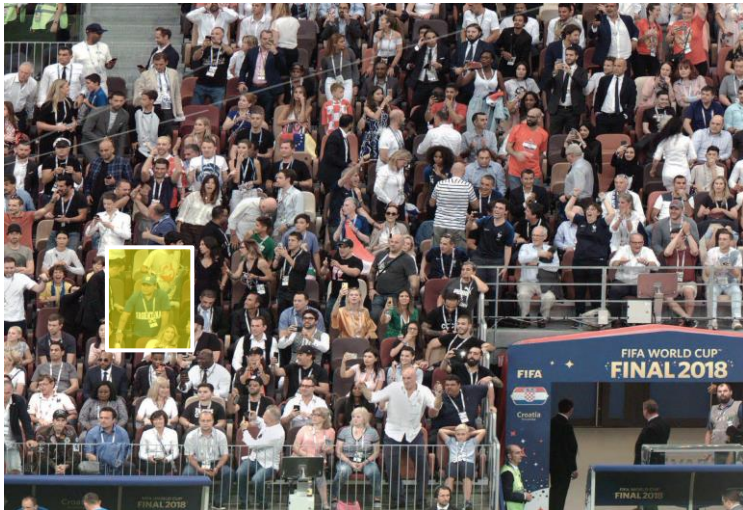


SENORTEC CROWDS & STADIUMS SOLUTIONS



SensorTec stadium solutions are designed to keep stadium crowds under surveillance before, after and during events with a resolution level of 100-320MP that is high enough to identify all individuals. Our system helps maintain safety in stadiums as operators can quickly respond to any suspicious or critical situation. They can inform and navigate security staff effectively, and they can also investigate prior incidents collecting irrefutable visual evidence.

SensorTec stadium solutions have been deployed in more than 70 stadiums around the globe to date. Among many prestigious venues, the main stadiums of 2018 FIFA World Cup have been equipped with the our systems, which proved its capabilities during the games. More than a decade has passed since our first stadium project, meanwhile the system has been continuously and progressively evolved.



[Click to watch the video](#)
Stadiums Surveillance - FIFA World Cup 2018.



SensorTec 100MP Virtual Panoramic Camera - 100% of the full image.

Click to watch the video
Traffic Management .

SENSORTEC INTEGRATED SYSTEMS



Human

hostile
46.766069, 19.146671
distance: 400 m



Human

friendly
46.761300, 19.144019
distance: 980 m

YOU NEED OUR SYSTEMS, IF YOU WOULD LIKE TO...



ONE MANUFACTURER, MULTIPLE TECHNOLOGIES

We provide multiple technologies, you can guarantee the quality and consistency of our systems and trust their delivery and service level.



MODULAR MULTI-LAYERED SOLUTIONS

Integrating multiple systems including panoramic cameras, EO/IR PTZ cameras, radars, RF detectors and jammers.



MONITOR ENTIRE VAST AREAS

Up to 16 Km² area can be monitored with one camera that provides better spatial orientation and VCA based decision making support.



EXTREME RESOLUTION MONITORING

200-960MP panoramic video footage contains high-resolution details for patrol units that can serve as evidence during investigations.



INTELLIGENT AI COMPUTER VISION TECHNOLOGIES

Providing AI-based systems specially developed to detect, classify and track targets automatically even few kilometers away.



REAL-TIME DECISION MAKING SUPPORT

Minimizing false alarm rate by highlighting potential threats only with their high-resolution visual images and real-time geo-position.



MULTIPLE TARGETS TRACKING

Providing automatic multiple target tracking based on VCA. Targets are highlighted on an interactive map and also on the panoramic view.



REAL-TIME GPS COORDINATES

Allowing operators to effectively guide patrol units to the exact spot, where they can take efficient actions to stop illegal activities.



MIL-SPECS HIGH-GRADE MATERIALS

Our systems are built according to military standards with IP67 rating and reliable construction that can withstand extreme environments.



VARIOUS MOUNTING


Our systems can be adjusted for use with different mountings to be fixed, portable or mobile vehicle mounted.

SENSORTEC MTDU

MULTI-TECHNOLOGY DETECTION AND TRACKING UNIT

SensorTec employs an integrated system referred to as the Multi-Technology Detection and Tracking Unit (MTDU), which provides the ability to track multiple targets simultaneously. MTDU uses Tracking Radar, Long-range Thermal Camera, Long-range Visible Day/Night Camera, Panoramic Camera to enable the detection, tracking, identification, and classification of illegal border entries.

3D RADAR DETECTION

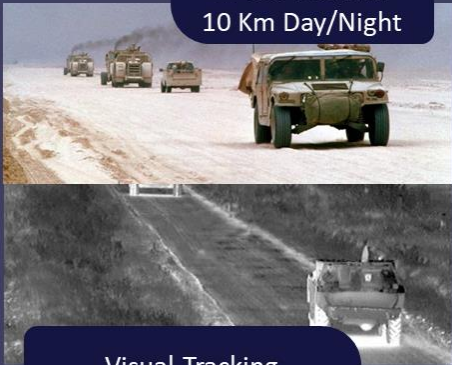


30 Km

Location Map

Early object detection, tracking and identifying location, speed, size and direction.

VISUAL TRACKING




26 Km Thermal
10 Km Day/Night

Visual Tracking

Follow the progress or movements of selected targets.

PANORAMIC VCA VIEW



6 Km

Panoramic View

Multiple targets detection and tracking with full VCA.



[Click to watch the video](#)
SensorTec MTDU - Borders Security.



SENSORTEC PANORAMIC E-GUARD

MULTI-TECHNOLOGY DETECTION AND TRACKING UNIT



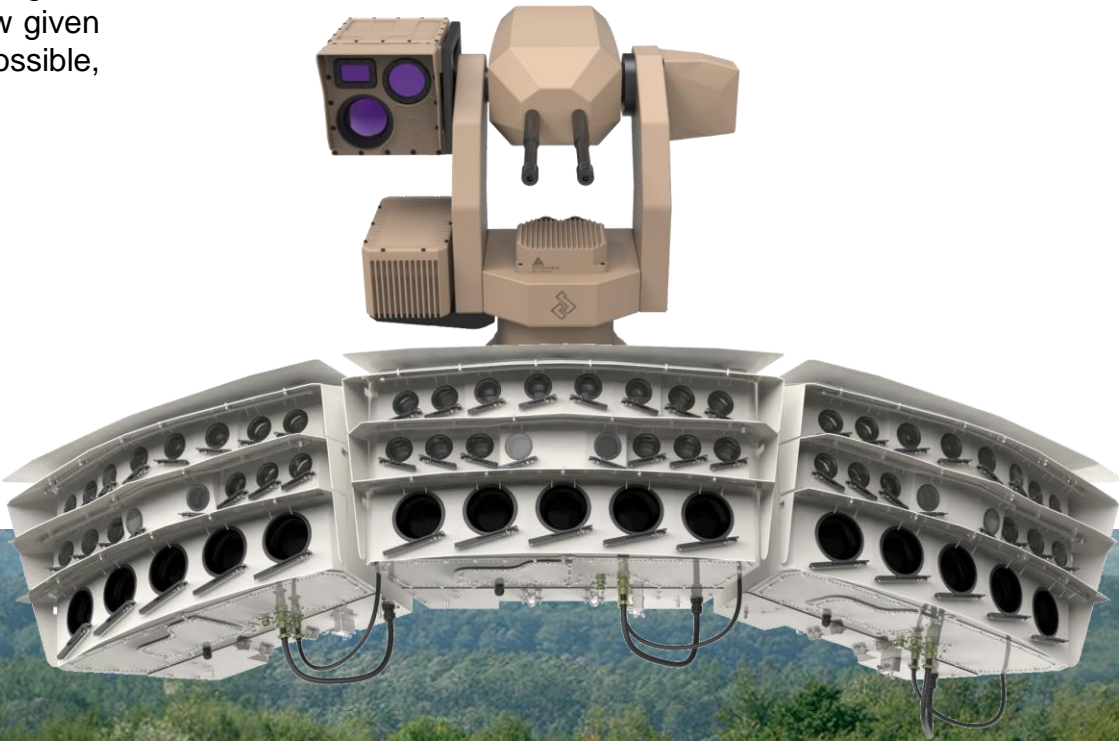
Panoramic E-Guard is a fully autonomic homeland and asset protection system. It is designed to detect and recognize all intruders in a designated area. Once an intruder is detected the system gives clear instructions how to move away from the protected area. In case intruder does not follow given instructions, system goes into protect mode and neutralizes the intruder in the safest way possible, avoiding any long term damage of the intruder.

NEUTRALIZATION SYSTEM

Range: 50-100m.

Ammunition: Nylon / Teargas.

Calibre: 0.68 / 0.5 / 0.43.



[Click to watch the video](#)
SensorTec Panoramic E-GUARD .



SENORTEC ANTI-DRONE/UAV SYSTEM

SensorTec offers a compact air defense solution against drones/UAVs that was developed and tested for border protection projects. Radar, long range observation system, radio frequency detector and high power radio frequency jammer are able to detect, recognize, identify and soft/hard kill flying objects.

Our system is built to operate 24/7 continuously and it can be installed as fixed, portable or mobile solution. Integrated 3D radar works with the latest generation solid state technology electronic scanning. Thermal camera gives the system long detection, recognition and identification range.



SENSORTEC MOBILE IN-VEHICLE SYSTEMS

SensorTec mobile (in-vehicle) surveillance systems can be used for monitoring small or large areas of land or sea. They offer high mobility and good comfort for the operators, easy upgrading of the system with additional equipment. They are used for border surveillance, perimeter monitoring and other surveillance missions. These vehicles can be connected to a command center and provide a vital component to a complete security and surveillance solution.

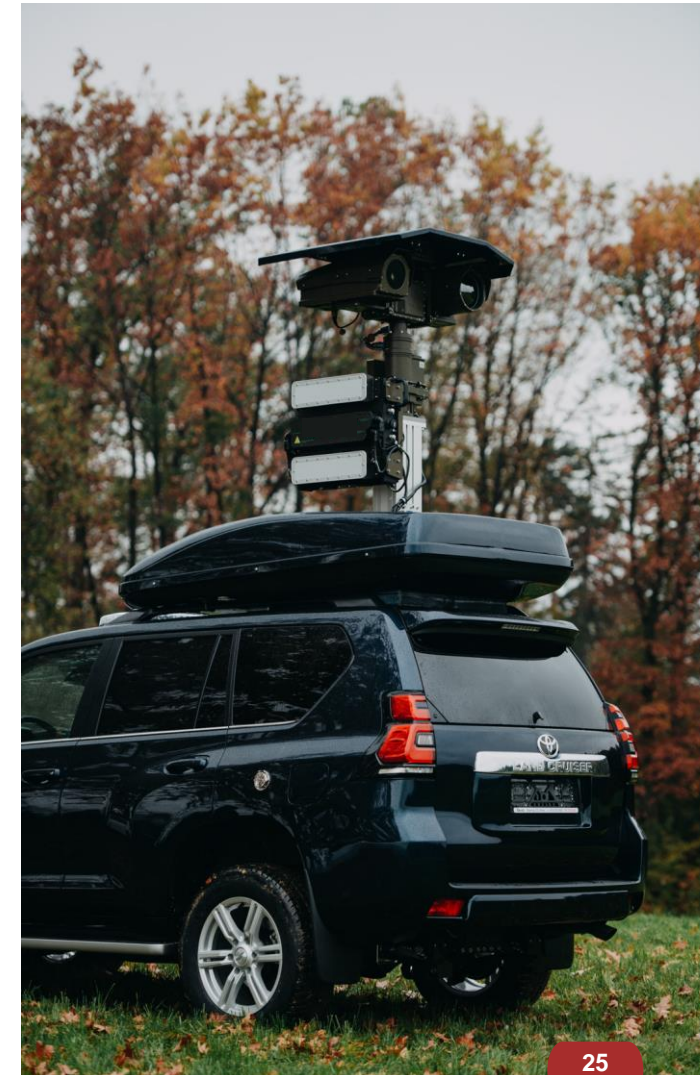
MOBILE SYSTEMS WITH DIFFERENT SENSORS

Long Range Multi-Sensor Camera.

Precise 3D Tracking Radar.

Digital Compass, GPS.

Digital Map with Target Position.



SENORTEC DRONES/UAVS INTEGRATION WITH UNATTENDED GROUND SENSOR SYSTEMS

Unattended Ground Sensors (UGS) provide reliable and continuous monitoring and surveillance of borders located in rugged mountain terrain, heavy forests and harsh climates.

Seismic sensors are lined up and buried underground in such a way that their circular detection zones overlap and create continuous, hidden protection along the boundary. The UGS processes alarms itself to effectively eliminate false alarms. In some cases, the system's concealed installation can be an even greater advantage. Alarm data is transmitted over long distances through a mesh radio network to a command center.

The system can be supplemented with drones for real-time mapping, tracking and monitoring. operator can use the locations of ground sensors to make a flying route for a drone. The drone reaches the location of trespassing as soon as one or several ground sensors start transmitting alarms.



25 Hours Flight, 180km Range
Long Endurance Unmanned Aircraft System.



Click to watch the video
Unattended Ground Sensor Systems.



SENSORTEC KEY PRODUCTS



Human

hostile
46.766069, 19.146671
distance: 400 m



Human

friendly
46.761300, 19.144019
distance: 980 m

SENSORTEC PANORAMIC CAMERA SYSTEMS

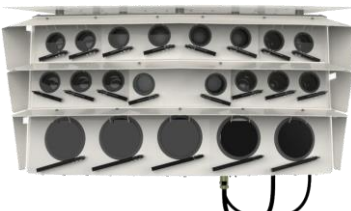
	PANORAMIC CAMERAS								VIRTUAL PANORAMIC
CAMERA TYPE	40° 320MP Dual Vision	10° 100MP Dual Vision	40° 320MP	180° 300MP	180° 200MP	90° 100MP	20° 200MP	10° 100MP	20MP cameras Variable Structures
VISION	Visible Light and Thermal		Visible Light						
DESIGN	Industrial Grade Military Grade Marine Grade								Custom Housings
EMBEDDED INTELLIGENCE	Video Content Analysis								
RELATED NVR	SensorTec 4 th Gen. Network Video Recorder (Rack-Mounted and Outdoor)								
INTEGRATION	Multi-Sensor System Radar Thermal Camera LASER PTZ Camera IR Flash								
VIDEO MANAGEMENT SOFTWARE	Control Center (Professional or Ultimate)								



180° 200MP
Panoramic Camera



90° 100MP
Panoramic Camera



40° 320MP Dual Vision
Panoramic Camera



40° 320MP
Panoramic Camera



20° 200MP
Panoramic Camera



180° 300MP
Panoramic Camera





UNBEATABLE RESOLUTION

SENSORTEC PANORAMIC CAMERA SYSTEMS

UNBEATABLE RESOLUTION



SensorTec applies several specifically developed, high-quality sensor-lens combinations within massive, purpose-designed camera units. Their enormous resolution ensure the cameras deliver useful visual information from even kilometers away.

AUTOMATIC DETECTION AND TRACKING BY COMPUTER VISION

PANORAMIC CAMERA	HUMAN (23 PPM)	LIGHT VEHICLE (12 PPM)	HEAVY VEHICLE (8 PPM)	AIRPLANE (2 PPM)
40° 320MP*	3,000 m	5,900 m	8,860 m	35,400 m
180° 300MP	600 m	1,170 m	1,760 m	7,048 m
180° 200MP	600 m	1,170 m	1,760 m	7,048 m
90° 100MP	600 m	1,170 m	1,760 m	7,048 m
20° 200MP	3,000 m	5,900 m	8,860 m	35,400 m
10° 100MP*	3,000 m	5,900 m	8,860 m	35,400 m



120° 960MP
Dual Vision Panoramic Camera



[Click to watch the video](#)
Panoramic Camera - River Monitoring.



DRONE-MOUNTED PANORAMIC CAMERA

SensorTec Drone-mounted Tethered Panoramic Camera is developed to be mounted on different types of drones to monitor vast areas with wide angle panoramic view.

DRONE-MOUNTED TETHERED PANORAMIC CAMERA

- 120MP resolution and 120° horizontal Field of View.
- Day-night operation modes.
- AI for human and vehicle detection up to 1000m.
- Picture enhancement algorithms for foggy, rainy weather conditions.
- Real-time camera image stitching to create panoramic view and zoom.
- High Dynamic Range (HDR).
- Precisely stitched panoramic image with white balance and gradient compensation.
- Rugged housing.
- Small size and could be mounted on small drones.
- Light weight 1.5Kg.



120° 120MP
Drone-mounted Tethered Panoramic Camera



SensorTec 120° 120MP Drone-Mounted Panoramic Camera - 30% of the actual image size.

SENSORTEC MULTI-SENSOR CAMERA SYSTEMS

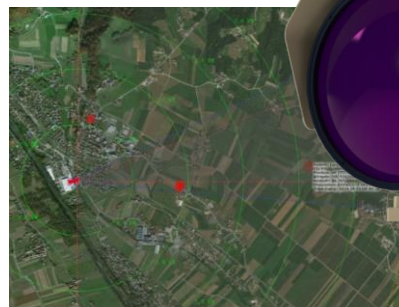
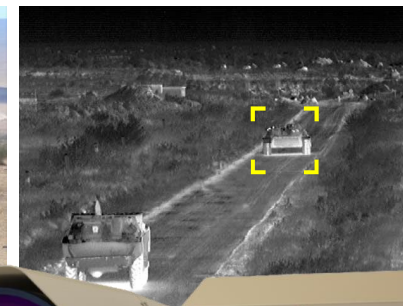
- Simultaneous preview of day/night and thermal cameras.
- Continuous zoom on both payloads.
- Radar connectivity (Slew to Cue) and tracking.
- Video tracking with auto/manual target acquisition.
- Auto/manual/remote focus on both payloads.
- TCP/IP interface.
- Compatibility with 3rd party payloads.
- Electronic image stabilization on both payloads.
- Rigid system design (up to 90km/h wind speed resistance without damage).
- Temperature range of the whole system: -32°C to +55°C.
- Maximum humidity of the whole system: 95%.
- Long lifetime with extremely high MTBF up to 20200 H.
- Comply with IP67, built according to MIL-810.

Vibration test: IEC 60068-2-64.

Shock test: IEC 60068-2-27.

Icing test: NEMA 250.

Salt fog test: IEC 60068-2-52.



MODULAR
VARIETY PAYLOADS
COMBINATION



MULTI-SPECTRAL
Visible, SWIR, MWIR, LWIR



LONGEST RANGE
UP TO 200X ZOOM LENS



WIDE ANGLE
UP TO 47° HORIZONTAL FOV



WEATHERPROOF
55°C TEMPERATURE
AND 95% HUMIDITY



MILITARY GRADE
BUILT ACCORDING
TO MIL-810 STANDARD



RADAR INTEGR.
WITH SLEW TO CUE
AND TRACKING



STABILIZATION
GYRO AND ELECTRONIC
STABILIZATION (EIS)



MOUNTING
FIXED, PORTABLE,
VEHICLE MOUNTED

SENSORTEC MULTI-SENSOR CAMERA SYSTEMS



All our multi-sensors are modular, allow the client to select the combination of payloads they need for their specific application. Configuration of every multi-sensor is tailored to requirements of the specific project and the environment in which it will be used (fixed, portable, vehicle mounted, ...).

Multiple payloads on one pan-tilt system within a separate housing
Individually removable to enable service of one payload while the other is still operational

- Long-Range Thermal Camera (Cooled MWIR or Uncooled LWIR)
- Medium-Range Thermal Camera (Cooled MWIR or Uncooled LWIR)
- Day/Night Camera (Regular or Low Light).
- SWIR Thermal Camera.
- Ground, Air or Multi-mode Radar.
- Robust Pan Tilt System.
- Laser Range Finder (LRF).
- Video Processing Unit (VPU).
- GPS.
- Digital Magnetic Compass.
- Microphone.
- Electric Mast or Tripod.
- Lens Cleaning System.
- Gyroscope Stabilizer.
- C3 with GIS Software for Preview and Control.



SENSORTEC MULTI-SENSOR CAMERA SYSTEMS

ULTRA LONG-RANGE SURVEILLANCE

SensorTec provides a leading-edge fully customized multi-sensor cameras employing the longest range visible day/night zoom cameras and the latest focal plane array technology for cooled or uncooled thermal infrared cameras to meet long-range surveillance and target identification requirements.

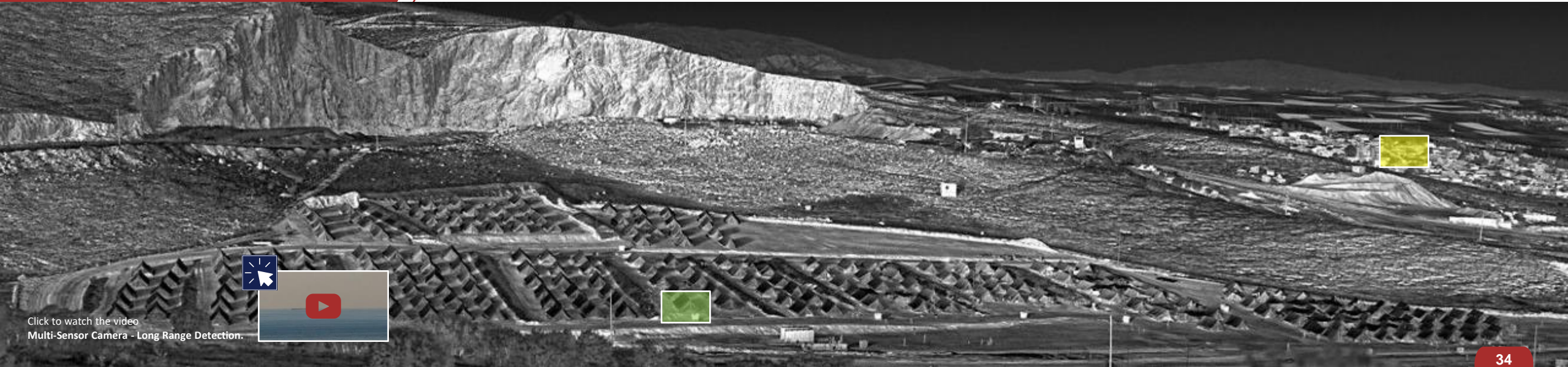
MWIR COOLED
26Km
Vehicle Detection

LWIR UNCOOLED
17Km
Vehicle Detection

SWIR UNCOOLED
35Km
Vehicle Detection

VISIBLE LIGHT
10Km
Vehicle Detection

The value depends on the selected detector and cooler.



Click to watch the video
Multi-Sensor Camera - Long Range Detection.

SENSORTEC LONG RANGE LASER PTZ CAMERA

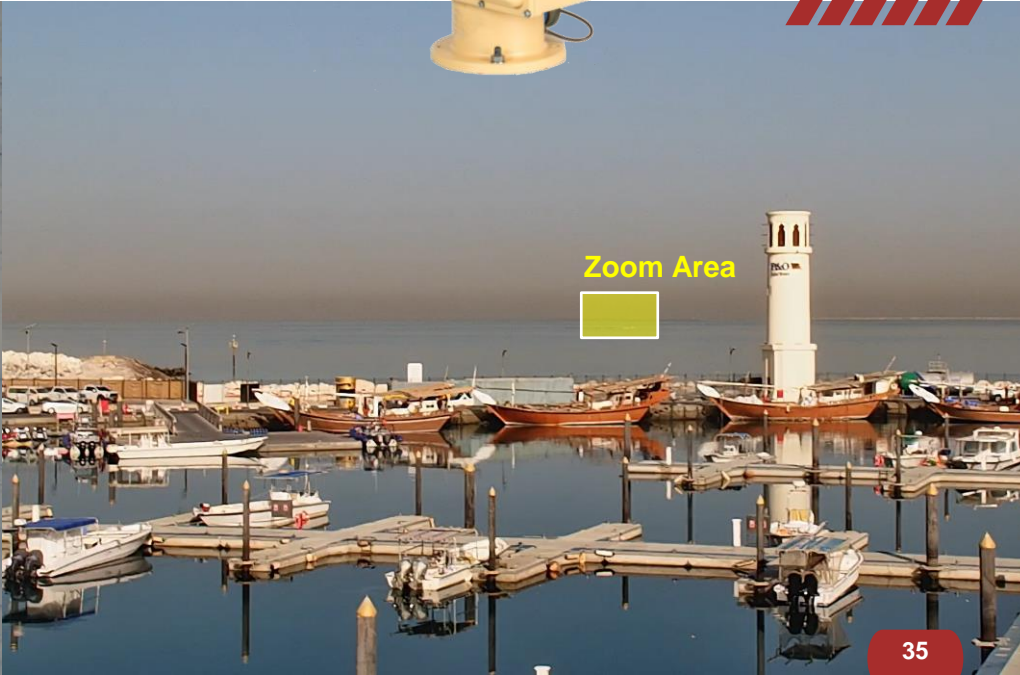
10km day, 5km night long range LASER PTZ camera system is composed of a LASER illuminator with collimator and visible light camera in the same housing, mounted on a Pan-Tilt unit. The visible light camera allows observation under all weather conditions even in fog, rain or snow. The platform pan-tilt unit is able to turn the camera in all direction, both in azimuth and elevation and controlled from the operator place or remotely from the existing control room. The integrated LASER illuminator has synchronized beam with the camera field of view enables the camera to see in total darkness without emitting any visible light. This makes this system the best low-cost day/night long range observation system without using a thermal camera.



Click to watch the video
Long Range LASER PTZ Camera.



SensorTec Long Range LASER PTZ Camera - Boat Tracking at 5Km.



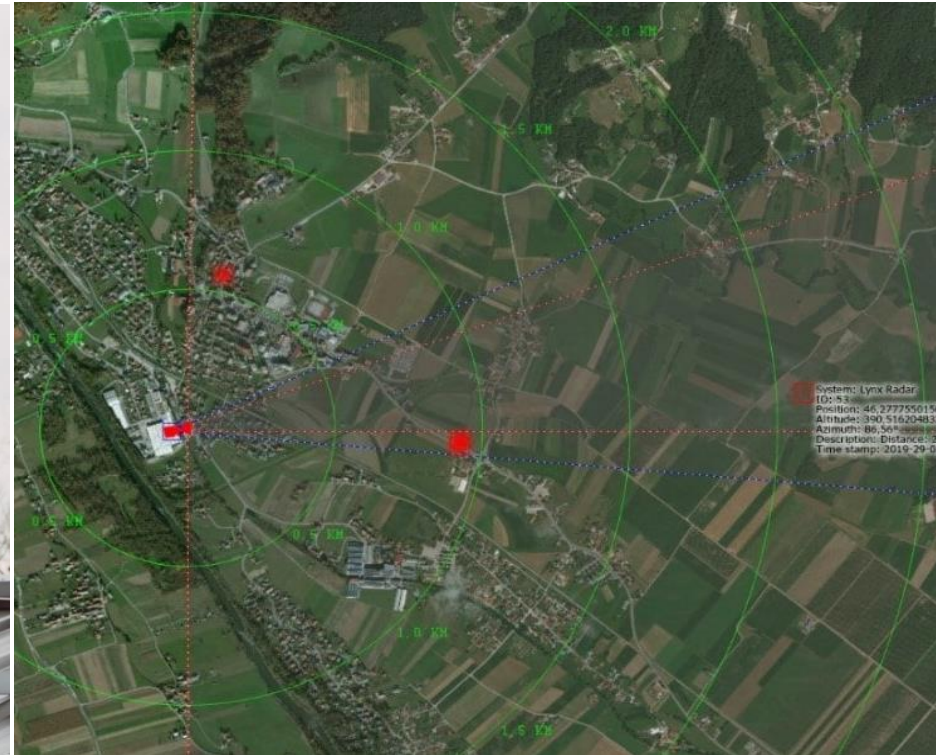
SENSORTEC SURVEILLANCE RADARS

GROUND, AIR, COASTAL AND MULTI-MODE RADARS



SensorTec offers a comprehensive solutions for short, medium and long range detection applications by integrating our electro-optics systems with various configurations of counter-drone, ground surveillance and coastline security radars.

SensorTec radars scan and detect fast moving objects over a wide area and provide exceptional detection performance up to 40km with rapid electronic or mechanical scanning of 90°, 270°, 180° and 360°.



SENORTEC HIGH-END NETWORK CAMERAS

SensorTec Network Camera Series is the professional-level network camera designed for those who are seeking for the up-most in quality, integration, design and reliability for their demanding surveillance needs. We offer a comprehensive product lineup which ranges from standard monitoring to AI cameras, meeting various requirements for video surveillance from entry level to high end.

Indoor, Outdoor, Submersible and Ex-Proof Network Cameras.

Type: Dome, Fisheye Dome, Mini Dome, Panorama, Bullet, Mini Bullet and Box with Lens.

Resolution: 2 / 3 / 4 / 5 / 8 / 12 / 20 MP.

Lens: Fixed, VF and Motorized Zoom VF.



2 / 3 / 4 / 5 / 8 MP Bullet Camera.
Indoor, Outdoor / Fixed, Motorized Zoom VF.



2 / 3 / 4 / 5 / 8 MP Dome Camera.
Indoor, Outdoor / Fixed, Motorized Zoom VF.



20MP VF Lens Camera.
With IP67 Outdoor Housing.

SENORTEC HIGH-END NETWORK VIDEO RECORDERS

SensorTec high-performance network video recorder specifically designed to record and manage the video streams of the latest generation our multi-sensor and single sensor cameras. Our NVR series offers a robust system for diverse applications and empowers users to set up and manage advanced IP surveillance systems with ease.



Outdoor NVR Series.
For Panoramic and Single Sensor Cameras.



Indoor NVR Series.
For Panoramic and Single Sensor Cameras.



Indoor H.264/H.265 NVR Series.
For Single Sensor Cameras.

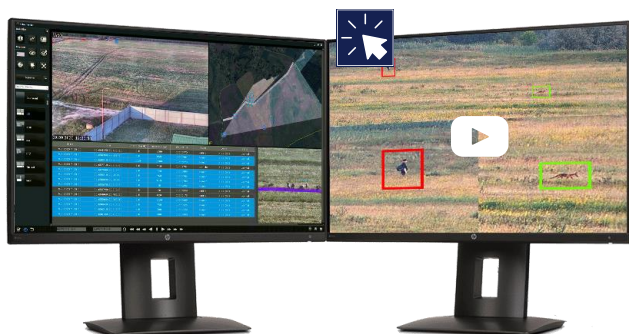
SENSORTEC SOFTWARE

SENSORTEC C2 CONTROL CENTER

SensorTec C2 software package is developed specifically for panoramic surveillance solutions.

It provides centralized monitoring where all visual information and data are fused and displayed.

Front-end visualizations of filtered and weighted alarms guide the attention of operators, this way they can always focus on urgent situations and react quickly.



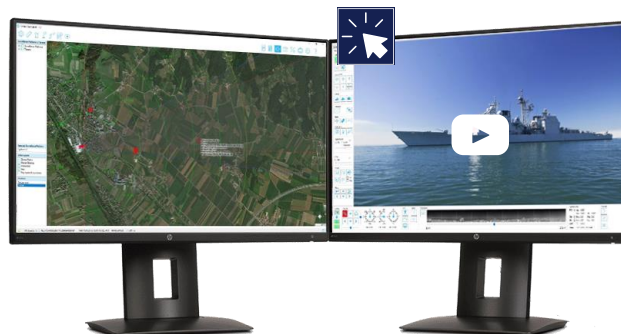
SensorTec C2
Control Center

SENSORTEC C3 COMMAND, CONTROL AND COMMUNICATION CENTER

SensorTec C3 software package acts as a connection point for all subsystems (Day/Night cameras, Thermal camera, Pan-Tilt, Radars, etc.) and as a distribution point for data system parameters, diagnostics, imaging etc.) to all connected clients.

GIS Map Software Main Features

- Map image streaming.
- 3-D Map navigation.
- Map Presets.
- Map layer management.
- Angle, distance area measurements.
- 3D slew to cue functionality.



SensorTec C3 Command, Control
and Communication Center

SENSORTEC VMS VIDEO MANAGEMENT SYSTEM

SensorTec VMS Enterprise (ONVIF compliant) is a professional and intelligent video management software designed for medium to large projects. Together with SensorTec cameras, it can simplify and freshen up your video surveillance. With advanced client/server architecture, it fulfills your demands and expectations, with rich core functions including live view, record, E-Map, event alarm and smart analysis etc.

SensorTec VMS Enterprise already has AI capabilities enabled. The intelligent attributes of humans and vehicles can still be filtered and alarmed by the on-server AI video analytics, regardless of whether the front-end IPC is AI or non-AI.



SensorTec VMS
Video Management Software

SENSORTEC HIGH-END WIMAX AND MICROWAVE SYSTEMS

A Complete Range of Wireless Solutions for both PTP and PTMP Fixed Wireless Deployments.

SensorTec has a vast experience in the wireless video surveillance market. We design, supply and implement a high reliable wireless security solutions for border security, traffic monitoring, highway safety, city surveillance and many others.

SensorTec wireless solution boosting easy installation and maintenance, quick deployment, flexibility, scalability and long lifetime.





CONTACT US



SensorTec Security Systems
www.sensortec-eu.com | sales@sensortec-eu.com



SensorTec UK
Sydney House,
62 Lancaster Way, Ely,
Cambridgeshire, UK.
+44 1353 523549

SensorTec UAE
701 Thuraya Tower 1,
Dubai Internet City,
Dubai, UAE.
+971 4 367 0351 | +971 50 496 1750

SensorTec KSA
Prince Muhammad Ibn Saad
Ibn Abdulaziz Rd,
Riyadh, KSA.
+966 53 222 2848