



MIMO Link 2x2 Family

Description:

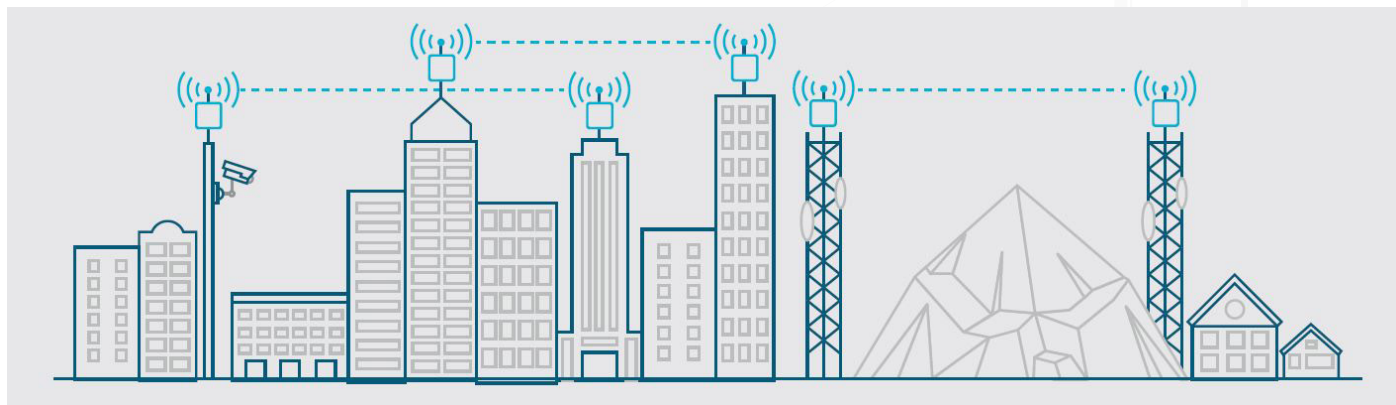
Point-to-Point system for last-mile access with a built-in firewall, router and security features. MIMO Link 2x2 Family offers a unique combination of high performance, availability and ease of installation. Throughput now can reach up to 670 Mbps, and the system works at distances of over 100 km.

- 5+6 GHz
- 670 Mbps
- 180, 000 pps

MIMO Link 2x2 Family is a wireless Point-to-Point solution operating in 4.9–6.4 GHz frequency bands. The built-in network firewall blocks suspicious traffic and ensures secure connectivity. To be optimally integrated into existing networks, MIMO Link 2x2 Family supports numerous network protocols including dynamic routing OSPF and RIP, network address translation NAT and Q-in-Q Vlan. There are tools for smart traffic prioritization and shaping, which provide high-quality services to customers. A rich portfolio of integrated antenna models allows the deployment of these systems at distances in excess of 30 kilometers, whereas a connectorized version is able to work at distances of over 100 km.

Applications

- High-capacity last mile access infrastructure
- Long-range rural connectivity
- Backhauling for Wi Fi in public areas and parks
- Municipal networks
- Video surveillance, traffic management and public safety wireless infrastructure



Top Facts



Robustness

Expanded modulation coding schemes range for the highest possible performance in a high interference environment



Double frequency band

One device can be used in both 5 GHz and 6 GHz bands



Groundbreaking performance

MIMO Link 2x2 Family delivers impressive wireless throughput of up to 670 Mbps in 80 MHz








Security

Thanks to a built-in firewall and rich security features, traffic security is under your full control

Product Highlights

- Single system covering multiple bands in 5 GHz and 6 GHz
- Fully fledged L2 switch supporting VLAN, Q-in-Q, Spanning Tree Protocols
- Static and dynamic (RIP, OSPF) IP routing
- Advanced Quality-of-Service (QoS) and networking feature set
- Reliable and robust design

	ST-CH5670i-18 ST-CH6670i-18	ST-CH5670i-23	ST-CH5670i-25 ST-CH6670i-25	ST-CH5670i-28 ST-CH6670i-28	ST-CH5670e ST-CH6670e
					
	ST-CH5670i-18 20 ST-CH5670i-18 50 ST-CH6670i-18 20 ST-CH6670i-18 50	ST-CH5670i-23 20 ST-CH5670i-18 50	ST-CH5670i-25 20 ST-CH5670i-25 50 ST-CH6670i-25 20 ST-CH6670i-25 50	ST-CH5670i-28 20 ST-CH5670i-28 50 ST-CH6670i-28 20 ST-CH6670i-28 50	ST-CH5670e 20 ST-CH5670e 50 ST-CH6670e 20 ST-CH6670e 50
5 GHz	4900–6050 MHz	4900–6050 MHz	4900–6050 MHz	4900–6050 MHz	4900–6050 MHz
6 GHz	4900–6425 MHz	4900–6425 MHz	4900–6425 MHz	4900–6425 MHz	4900–6425 MHz
Antenna	18 dBi 18x18 deg	23 dBi 10x10 deg	25 dBi 8x8 deg	28 dBi 5x5 deg	2xN-type connectors
Size and weight	188x188x45 mm 1.3 kg	305x305x66 mm 1.75 kg	350x350x71.5 mm 2.3 kg	600x600x68 mm 5.8 kg	180x190x86 mm 1.2 kg

Technical Specifications

Performance	
Throughput	Up to 650 Mbps, net aggregate
Packet performance	Up to 180,000 packets per second
Radio Technology	
Technology	MIMO 2x2 with OFDM 64/128
Modulation coding schemes	9 MCS – from BPSK1/2 to QAM2565/6
Frequency range	CH5 models: 4900 – 6050 MHz CH6 models: 4900 – 6425 MHz
Channel width	20, 40, 80 MHz
Center frequency adjustment step	125 kHz
Transmit power	Up to 25 dBm
Receiver sensitivity	Down to -91 dBm
Duplex scheme	TDD
Antenna	Integrated dual polarization flat panel 18, 23, 25, 28 dBi Connectorized: 2x N-type connectors for external dual-polarization antenna
Maximal range	More than 100 km for high gain external antenna
Air Protocol	
Air frame	Configurable from 2 to 10 ms
Automatic modulation control	Supported
Automatic ranging	Supported
Wired Interfaces	
Ethernet	1x Gigabit Ethernet port (RJ45)
PoE	802.3at or SensorTec Wireless proprietary passive PoE
Networking	
MAC/IP filtering	Supported
NAT	Multipool, H.323-aware
VLAN	802.1ad (DVLAN Q-in-Q), 802.1Q
Tunneling	Ethernet-over-IP, IP-over-IP
QoS	
Queues	17 queues
Packet classification	802.1p, IP TOS / DiffServ support
Traffic limiting	Absolute, relative, mixed

Technical Specifications

Management and Installation	
LED indication	Power status, link status and RSSI indication
Management protocols	HTTP, HTTPS, SSH, SNMP, Telnet
Web GUI tools	Antenna alignment tool, Spectrum analyzer
Physical	
Operating temperature range	From - 40° to +60°
Dust and water protection	IP66, IP67
Wind load	160 k m/ h, operational; 200 k m/ h, survival
Power supply	IDU-CPE-G(24W), IDU-BS-G (60W), IDU-LA-G(V.01), AUX- ODU-INJ-G
Power consumption	Up to15 W
Compliance	
Safety	EN/IEC 62368-1:2014/A11:2017*, UL 62368-1:2014*, EN 62311:2008*
Radio	EN 301 893 v.2.1.1*, EN 302502 v.2.1.1*, FCC part15.407*
EMC	ETSI EN 301 489-1 v.2.1.1*, ETSI EN 301 489-17 v.3.1.1*, FCC Part15 Class B*
RoHS3	EN IEC 63000:2018*



sales@sensortec-eu.com



www.sensortec-eu.com



Sydney House, 62 Lancaster Way, Ely,
Cambridgeshire, CB6 3NW, UK.