

ST-CHD1200-1100

SensorTec Multi sensor
system

Product description

Multi sensor system (MS) is composed of a Day/Night Camera, Thermal Camera mounted on a pan-tilt unit. Day/Night and thermal cameras are installed on the same optical axis with a deviation of less than 0.05 dgr. The videos from both Day/Night and thermal cameras are available simultaneously as digital video H.264. MS includes a built-in test and status mechanism. All video distribution to viewing workstations is done digitally. Both video digital streams have low latency.

Functionality

Multi sensor system is equipped with day and night vision system and allows observation under all weather conditions even in fog, rain or snow. There is a thermal camera and a day-night high resolution camera with very high optical zoom placed on a movable pan & tilt platform. The platform will be able to turn the cameras in all directions, both in azimuth and elevation and controlled from the vehicle's operator place or remotely by the existing C&CC. The movable platform –pan tilt can accept different commands from the C&CC like home position, extremely slow

speed, high speed, variable speed in small steps-continuous, panoramic observation with constant speed, tour mode. A standard protocol is used. Day/Night and Thermal cameras have continuous optical zoom and continuous digital zoom. The System will provide stable picture in windy conditions with known - proven methods. The method chosen by the contractor will fulfil the end user expectations.

Construction and connection

The operator at the C&CC will be able to monitor the status of this power supply system. All data signals output from the MS can be sent to C&CC over a single Ethernet connection

System configuration

- Cooled MWIR Thermal camera
- Day/Night camera
- Pan-Tilt Blade
- Laser rangefinder
- Video processing unit (VPU-ST)



General features

- Simultaneous preview of day/night camera and thermal
- Continuous zoom on both payloads
- Radar connectivity (Slew to Cue)
- Radar tracking possibility
- Target acquisition and tracking (auto or remote triggering)
- Rigid system design
- Analytics board: video stabilization, multi object tracking
- CE marked
- Control and picture streaming via TCP/IP
- Gyro stabilized pan-tilt platform (Optional)
- Electronic image stabilization on both payloads
- Temperature range of the whole system: -32 to +60°C
- Maximum humidity of the whole system: 95%
- IP rating of the whole system: IP67

Vibration test: IEC 60068-2-64

Shock test: IEC 60068-2-27

Icing test: NEMA 250

Salt fog test: IEC 60068-2-52

Standard compliance: MIL-STD-810G,
MIL-HDBK-217-F
MIL-STD-461-F
MIL-STD-1275-D

Cooled MWIR Thermal Camera

ST-CHD series incorporates an incredible mega pixel MWIR cooled detector. It has similar features as ST-CHD series only with HD resolution of 1280 x 720 that provides modern standard ratio video of 16:9. Just like ST-CHD series, ST-CHD series features a long-life cooler which produce virtual zero maintenance system with an extremely high MTBF. ST-CHD series comes with a range of continuous zoom lens options with F/3-4 that ensures best image and long-range. This makes ST-CHD series cameras an ideal tool for very long-range observation over sea and land in HD resolution.



Technical Specification

Detector	Cooled MWIR
Resolution	1280 x 720
Frame rate	25 / 30Hz
Detector pitch	10 µm
Spectral range	3 to 5 µm
NETD	≤ 25mK
Focal length	70 to 1200 mm
Field of View	10.4° to 0.60° (H)
Continuous Optical Zoom	Yes, up to 17x
Continuous Digital Zoom	Yes, up to 16x
Focus	Automatic or Manual (remote)
Image stabilization	Yes (using VPU/ST)
Image processing	Tuneable Digital Detail Enhancement Histogram Equalization Non uniformity correction White Hot / Black Hot Colour Palette
Video outputs	HD-SDI, optional RTSP H.264 Ethernet stream (using VPU/ST)
Control interface	Serial, Ethernet
Consumption	35 W typical, < 120 W maximum with heaters / lens defrost
Operating voltage	18 - 48 Vdc
Operating temperature range	-32°C to +60°C
IP rating	IP67, built according to MIL-810

DRI

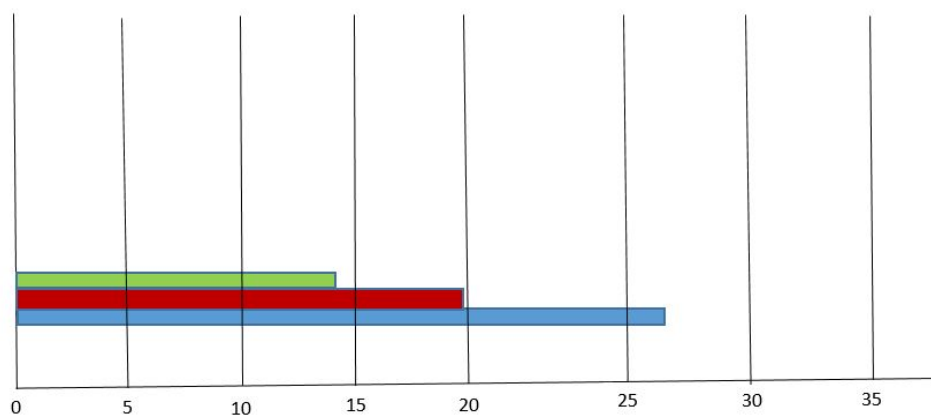
DRI – NATO (VEHICLE) TARGET (2.3m x 2.3m), STANAG 4347 METHOD

Detection	26.75 km
Recognition	19.61 km
Identification	13.92 km

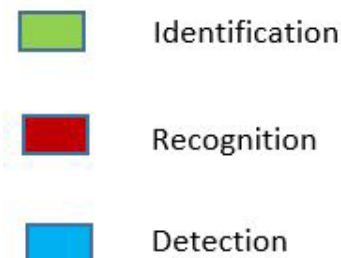
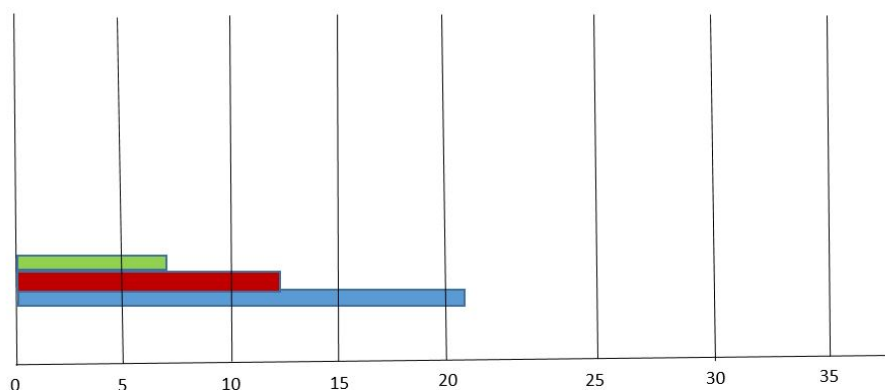
DRI - HUMAN TARGET (1.8m x 0.5m), STANAG 4347 METHOD

Detection	21.22 km
Recognition	12.37 km
Identification	7.41 km

Detection, Recognition, Identification of a Vehicle



Detection, Recognition, Identification of human



Day / Night Camera

The Day/Night Camera is an integrated unit, based on a highly sensitive CMOS megapixel camera module with sensitivity combined with powerful zoom lens. It is ideal for day/night surveillance of military camp, homeland security (border protection), and critical infrastructure protection (CIP) applications. It is designed to deliver high- performance images, even under the harshest conditions, in temperatures ranging from -32°C to + 60°C with IP67 protection, built according to MIL-810 standards.



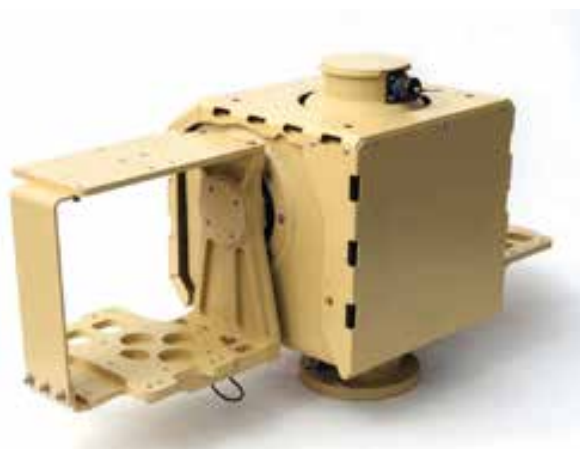
Technical Specification

Sensor	1/2.4" CMOS sensor
Pixels (H x V)	1920 (H) x 1080 (V)
Sensitivity	Colour 0.02 Lux @ (F2.1, 25 fps); B&W 0.001 Lux @ (F2.1, 25 fps);
Focal length	11 to 1100 mm
Field of view	28°- 0.29°
Continuous Optical Zoom	Yes, up to 100x
Continuous Digital Zoom	Yes, up to 16x
Focus	Automatic or Manual (remote)
Image stabilization	Yes* (using VPU/ST)
Optical filters	Colour: IR Cut filter / B&W: VIS + NIR / B&W: Defog Filter – NIR only
Image processing	Auto / Manual White Balance Auto / Manual Gain Control True Wide Dynamic Range Digital Fog Removal / Auto Contrast Dynamic Noise Reduction
Video outputs	HD-SDI or analog, optional RTSP H.264 Ethernet stream (using VPU/ST)
Control interface	Serial, Ethernet
Consumption	15 W typical, < 60 W maximum with heaters / lens defrost
Operating voltage	18 - 48 Vdc
Operating temperature	-32°C + 60°C
IP rating	IP67, built according to MIL-810
Dimensions	777 x 216 x 206 mm
Weight	18 kg

Pan-Tilt

A unit with a very unique design and high-performance characteristics. It has a built-in static top, which can carry additional 50kg of load. This design is used for a top mounted

radar with a separate rotator. Two side wings are used for electro-optical system, which can consist of various sensor options. Also integrated is a military standard IMU and gyro, when the unit is used in demanding environment and needs to be stabilized.



Technical Specification

Load capacity / Torque	30 kg + 30 kg / 60 Nm
Static top load capacity	50 kg
Weight	43 kg (full configuration)
Dimensions (H x W x L)	412 x 735 x 302 mm
Materials	Aluminium
Protection / IP rating	IP 67
Operating temperature	-32°C to +60°C °
Pan axis range / angle	n x 360°
Pan axis speed	0.001°/s - 125 °/s
Tilt axis range / angle	± 90° (depends on application)
Tilt axis speed	0.001°/s - 125 °/s
Accuracy	0.02°
Backlash	None
Stabilisation (Optional)	±300μrad
Operating voltage	24 - 48 VDC
Maximum power	120 W
Communication to the unit	Eth 10/100 Base-T, RS-232, RS-485/422(optional)
Control protocol	DC-PT standard protocol

External video processing unit

Video processing unit (VPU-ST) is a hardware processing unit that is the “brains” of the multi sensor system. It combines all the payloads and Pan-Tilt unit into a single unit for the external observer and enable a single Ethernet connection to the whole unit including access to video streams and control of the entire system. VPU-ST enables dedicated advanced protocol that includes video as well as status and control. It has a powerful built in processor, that enables functions like video stabilization, H.264 encoding, video tracking.

- Power control and communication with each device
- Built in test for each device (BIT)
- Integrated Ethernet switch
- Communication interfaces: Ethernet (UDP), Serial
- H.264 Video encoding for all video payloads
- Two separated output video streams



- Control and video interface through Ethernet and serial (control only)
- * Wide variety of video processing:
- * Video stabilization with roll correction
- * Advanced hardware scene and object video tracking
- * On Screen Display (OSD)
- Connectivity: four military standard connectors; 3 x input / 1 output
- Power: 18 – 48 Vdc; 30 W max.
- Environmental: IP 67, build with accordance to MIL-810
- Operating temperature range: -32 to 60°C
- Dimensions: 261 x 185 x 73 mm
- Weight: 3000 g

Laser rangefinder

LRF represents the ultimate long-distance laser rangefinder. It is light weight and features ranging capability up to 32 km. With reduced measurement ranges LRF meets high continuous measurement rates up 40 measurements per second in single mode and up to 200 Hz in burst mode.



Technical Specification

Eye safety	Laser Class 1
Measurement range	50m – 32 000m
Measurement range (Standard target):	10 000m – Target size 2.3 x 2.3 m, visibility 15 km, target reflectivity 30%, detection probability >90%
Precision	0.5 – 1.5 m depending on the distance and target reflectivity
Beam divergence	0.35 mrad
Wave length	1.54 μ m
Measurement rates	40 meas. per min
Control interface	Serial, Ethernet
Operating voltage	18 - 48Vdc
Power consumption	3 W on standby, 7 W max on measurement
IP rating	IP67, built according to MIL-810
Operating temperature	-32°C + 60°C
Dimensions	172 x 151 x 75 mm with connector
Weight	2 kg

ALL PICTURES SHOWN ARE FOR ILLUSTRATION PURPOSE ONLY. ACTUAL PRODUCT MAY VARY DUE TO PRODUCT ENHANCEMENT



sales@sensortec-eu.com



www.sensortec-eu.com



Sydney House, 62 Lancaster Way, Ely,
Cambridgeshire, CB6 3NW, UK.