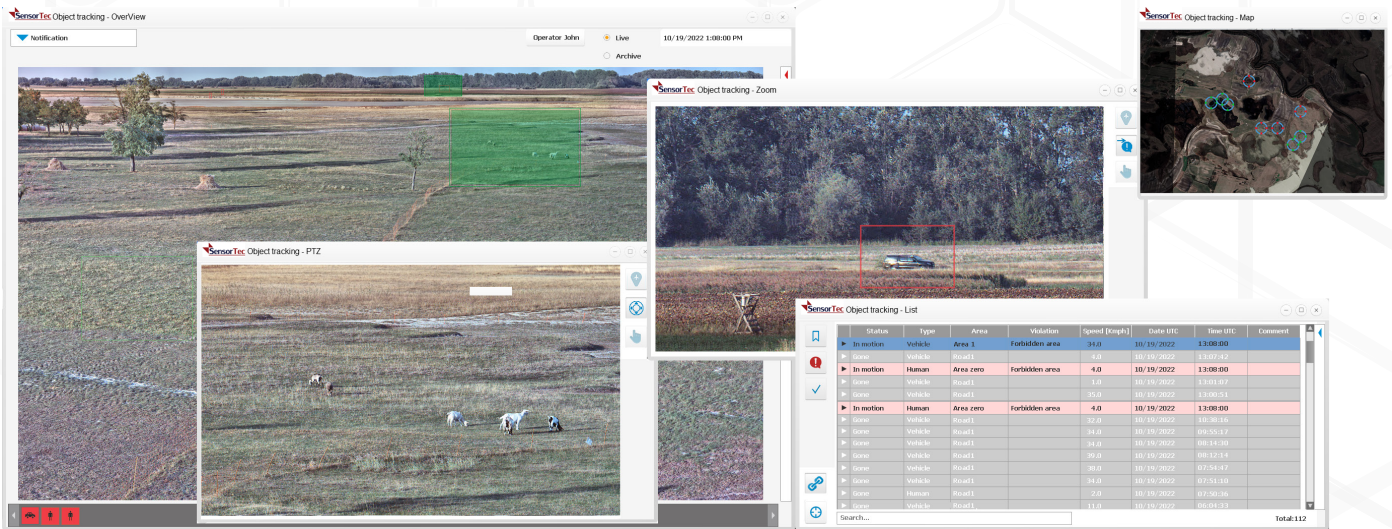


SensorTec Command & Control Center

COMMAND & CONTROL CENTER



SensorTec Command & Control Center is developed specifically for the surveillance of border and critical infrastructure areas. It provides centralized monitoring with a user-friendly interface, where all sensor information is fused and visualized in a modular front-end interface.

It allows for full-resolution monitoring in both real-time and historical modes and smoothly displays the video streams from SensorTec's visible-light and thermal panorama cameras. It also features an interactive map, zoom windows for tracking targets, and an informative event list. Each display module can be cross-mapped with the others. The software consistently highlights the most urgent situations, thereby guiding the attention of operators, who can then focus on suspicious activities, react quickly, and accurately instruct patrol units in the field.

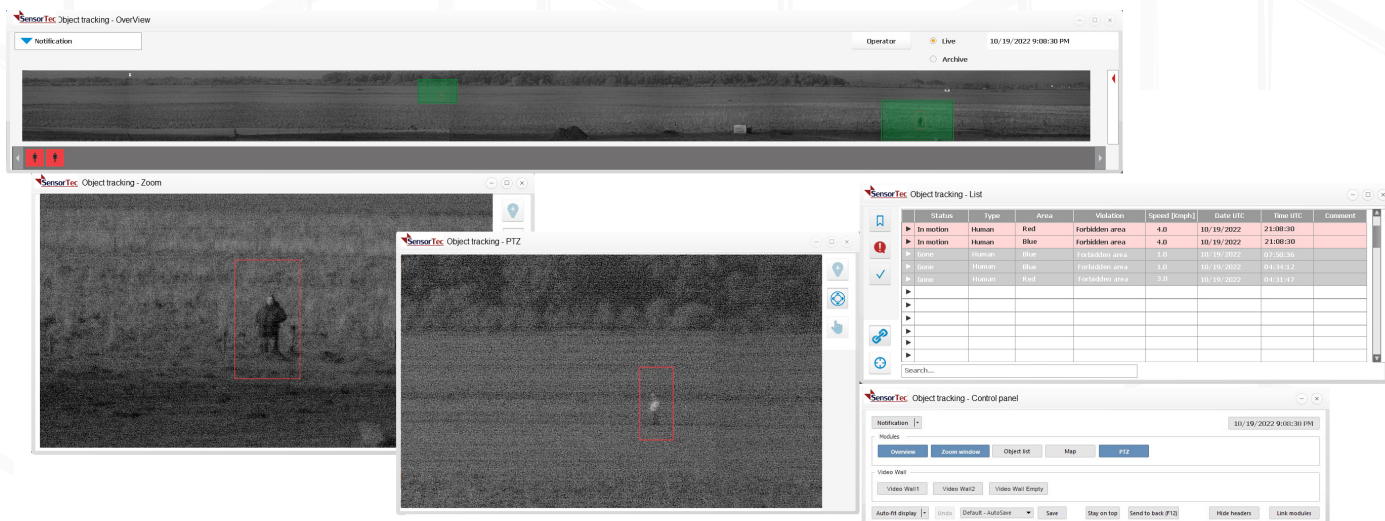
Minimum Requirements for Server Hardware

Operating system	Windows Server 2022
Processor	AMD Ryzen 9
RAM	64 GByte
Network	10 GBit

Minimum Requirements for Client Workstation

Description	SensorTec Command & Control Center Client
Processor	AMD Ryzen 9
Graphics card	ASUS nVIDIA RTX 2060
RAM	16 GByte
Network	10 GBit
Supported (Recommended)	Windows 10 ® Professional 64
Display	2 or 3 pcs 24" Display

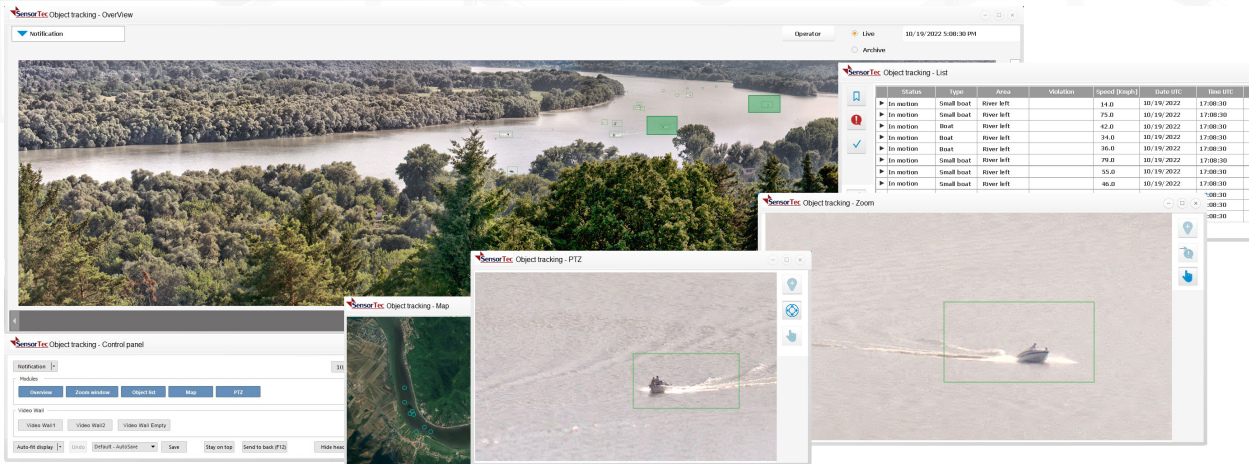
CLIENTS FUNCTIONAL DESCRIPTION



SERVER FUNCTIONAL DESCRIPTION

Description	SensorTec Command & Control Center Server Pack	
	Professional	Ultimate
Type	Professional	Ultimate
Number of clients: unlimited	Yes	Yes
CC Program user management / detailed	Yes	Yes
Authorization per cameras to watch the live pictures	Yes	Yes
Authorization per cameras to watch the archives	Yes	Yes
Authorization per cameras to download the archives	Yes	Yes
Sending e-mail	Optional	Yes
Video Wall Controller	Optional	Yes
Network security	1500 bit public-key RSA; User authentication	
Program user	Management and authorization	
	Records all user interventions	
SNMP	Yes	
Data storage	Combine SSD and in-memory	
Database	SQL	
Server architecture	Redundant, optional	
Integration	Interface for external positioning systems	
Object Tracking Server	Yes	Yes
Alert management	Yes	Yes

CLIENTS FUNCTIONAL DESCRIPTION



Type		Professional	Ultimate
Interactive map	Extension	Optional	Yes
Object tracking	Extension	Optional	Yes
Object or event list	Extension	Optional	Yes
Perimeter extension	Extension	Optional	Yes
Decision making support	Extension	N/A	Yes
Video Wall interface	Extension	Optional	Yes
Object based Video History	Extension	Yes	Yes
Zoom window selected object tracking function	Function	Optional	Yes
New target triggered zoom window	Function	Optional	Yes
SensorTec PTZ selected object tracking function	Function	Optional	Yes
New target triggered SensorTec PTZ window	Function	Optional	Yes
Capture camera function	Function	Yes	Yes
Control by touchscreen gestures	Function	Yes	Yes
Digi-zoom & SensorTec-Zoom (NVR side & Client side)	Function	Yes	Yes
Interactive PTZ control on the overview camera picture	Function	Yes	Yes
Multi-monitor mode	Function	Yes	Yes
Notification Center	Function	Yes	Yes
Panorama camera display	Function	Yes	Yes
Picture-in-picture	Function	Yes	Yes
Alert investigation & acknowledgment by Operator	Function	Optional	Yes
PointIT PTZ control	Function	Yes	Yes
Supervisor review	Function	Optional	Yes
GPS target localization	Function	Yes	Yes
Panorama camera & Thermal camera & Radar sensor fusion	Function	Optional	Yes
Panorama camera & PTZ camera cross mapping	Function	Yes	Yes
Panorama camera & Thermal camera cross mapping	Function	N/A	Yes
Panorama camera & Radar cross mapping	Function	N/A	Yes

CLIENTS FUNCTIONAL DESCRIPTION

PTZ target selection on panorama image	Function	Yes	Yes
Thermal camera target selection on thr Panorama image	Function	N/A	Yes
Display the radar detected target on the Panorama image	Function	N/A	Yes
Layers & Virtual fences	Function	Optional	Yes
Zoom history	Function	Yes	Yes
Operator notes to Alerts	Function	Yes	Yes
Archive playback & Download from Violation List	Function	Yes	Yes
Object labels	Function	Optional	Yes
Auto-Patrol - operatorless operation on Video Wall	Function	Optional	Yes
Health Report	Maintenance	Yes	Yes
Health Report Maintenance	Maintenance	Yes	Yes
Health Report export & attachment for repair	Maintenance	Yes	Yes
Send to Error message in SNMP trap	Maintenance	Optional	Yes
Send to Error report via E-mail	Maintenance	Yes	Yes
Audio playback	Video monitor	Yes	Yes
Download manager	Video monitor	Yes	Yes
Live video	Video monitor	Yes	Yes
Monitor profiles	Video monitor	Yes	Yes
Online Archive playback	Video monitor	Yes	Yes
Print / Save single picture	Video monitor	Yes	Yes
Video Matrix	Video monitor	Yes	Yes
Camera configuration – Visible, Thermal, PTZ, ONVIF	Configuration	Yes	Yes
Copy camera configuration	Configuration	Yes	Yes
Importing device from file	Configuration	Yes	Yes
Triggered setup-change	Configuration	Yes	Yes



sales@sensortec-eu.com



www.sensortec-eu.com



Sydney House, 62 Lancaster Way,
Ely, Cambridgeshire, CB6 3NW,
UK.