



ST-RP320LR-VX

320MP, Day/Night, Long
Range Panoramic camera
Designed for hot, humid and dusty
climate

Product description

- The Long Range Panoramic camera produces hundreds of megapixel large images on which every detail is clearly visible in all lighting conditions. The camera provides wide dynamic range images, have an improved low-light performance and extra high sensitivity.
 - This camera is able to cover large areas with high resolution from a single viewpoint.
 - The panoramic images ensure an expanded view. Operators can continuously observe the whole monitored area on one camera image without redundant or hidden areas.
 - The huge resolution even makes it possible to recognize faces at a large distance.
- The camera house is completed with an automatic self-cleaning system that consists of a tank with cleaning liquid, a dispenser system and wipers at every window for the best images.

GENERAL FUNCTIONS

- 1" size, CMOS image sensors with extra high-sensitivity
- 320 MP image resolution
- Monitoring vast areas
- Stitched panoramic images with white balance correction
- Synchronized imaging
- 20 FPS at full resolution
- JPEG2000 wavelet-based, visually lossless compression
- 10 Gbps SFP+ socket
- All-metal construction of the camera housing
- Quality glass windows with wiping and washing system
- Automatic self-cleaning system
- Active and passive cooling system specially designed for harsh environment

VCA Functions



Searching and tracking of humans, animals, light and heavy vehicles

The VCA accurately detects individuals within the monitored area even if they are kilometers away. It is also capable of multiple target tracking in a single panoramic image. Thanks to the ePTZ function the detected individual appears in a configured zoom window as well.

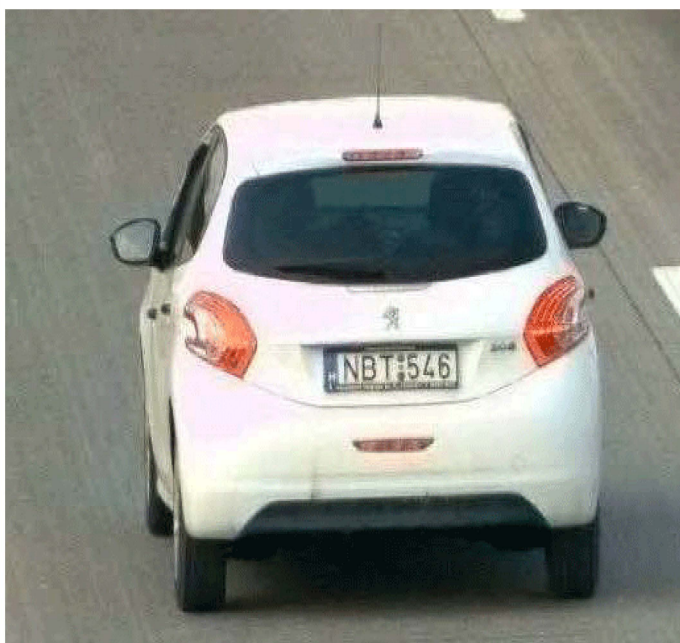
The VCA relies on a Multidimensional Gaussian Background Model in order to continuously adapt to the background and help avoid false alarms usually generated by the moving parts of background objects.

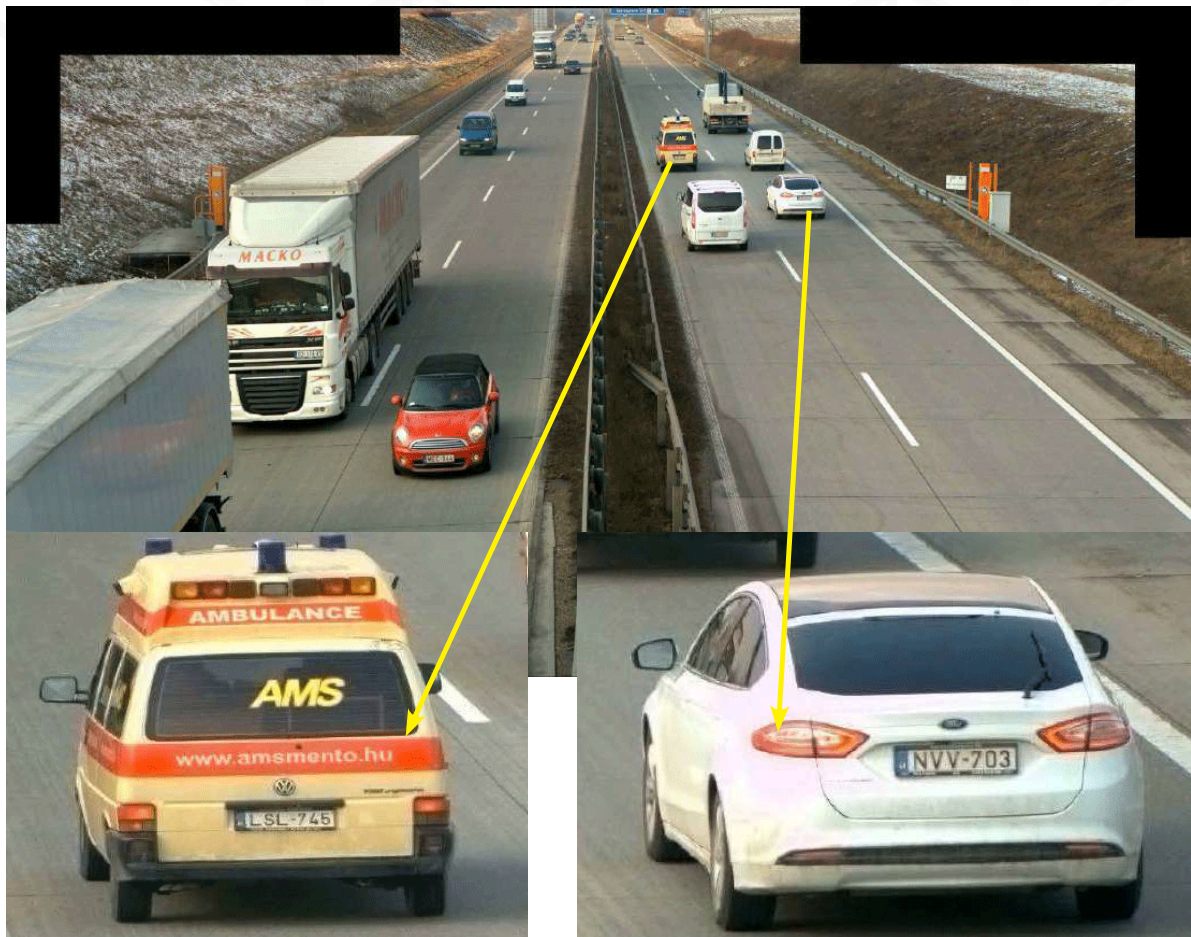
Tracking across camera boundaries

Even if operators see something suspicious in the live images, exact localization can be very difficult at natural border areas. SensorTec developed a feature that provides continuous, real time GPS-coordinates and distance information of the detected objects. This way operators can effectively guide patrol units to targets.

Vibration compensation

The VCA could compensate for the vibration resulting from different sources so that VCA analyze shaky videos and produce a stabilized one





SPECIALLY DEVELOPED FUNCTIONS IN SENSORTEC CONTROL CENTER

- Precise panoramic image stitching in the software
- White balance correction between the stitched camera images
- Easy zooming on the panoramic image
- Having multiple zoom windows on a single panoramic image
- Interactive PTZ control on the panoramic image
- Zone violation detection and immediate alarm
- Individually compressed frames
- Special optical filter and picture enhancement algorithm for foggy, rainy weather conditions
- Multi-time exposition and wide dynamic range to efficiently display sunlit

AUTOMATIC DETECTION AND TRACKING BY COMPUTER VISION

Target	ppm	distance
Human	23 ppm	3000 m
Light vehicle	12 ppm	5900 m
Heavy vehicle	8 ppm	8860 m
Airplane	2 ppm	35400 m

Technical Specification

Description	Multi-megapixel Auto Back Focus IP camera with 16 pieces of 1" sensor and ICR function for Day/Night switching in weatherproof house with wiper and washer
Resolution	320 Megapixel
Image format	Equivalent resolution 320 Megapixel
Frame rate	20 fps @ 320 MP
Video compression	JPEG2000 - Wavelet
Compression engine	MPX24 Signal Processor
Image sensor	1" WDR 20.48 Megapixel CMOS
Auto focus	Motorized back focus adjustment
Scanning system	Progressive, no interlaced scanning
Shutter type	Electronic rolling shutter (ERS)
Shutter mode	1/10 - 1/20 000 s, 1/1 s low shutter mode
Sensitivity	0.02 lux F1.4 Day mode or 0.002 lux F1.4 Night mode
Gain control	Fix, auto, blur or noise priority
Backlight compensation	Whole picture or any area selectable
Field of View	Horizontal: 40° Vertical: 24°
Inputs/Outputs	1 programmable IO connections
Sound	1 ch external 24 kHz/16bit, sound input and output
Intelligence	Integrated motion detection
Ethernet connection	10 Gbps SFP+ socket
Cooling system	Passive heat pipes
Cleaning system	Wiper with washer, fluid pump and internal tank

ELECTRICAL SPECIFICATION

Power supply	10-230 V AC
Power consumption	250 W
Operating temperature	-20°C to +65°C
Humidity	0 – 95% non-condensing
Protection classification	IP66

MECHANICAL SPECIFICATION

Material	Full metal housing
Weight	62 kg (with cameras and lens)
Dimensions (W × D × H)	1010 × 845 × 520 mm (with mounting bracket)
Package gross weight	97 kg
Package dimensions (W × D × H)	1160 × 950 × 660 mm

ALL PICTURES SHOWN ARE FOR ILLUSTRATION PURPOSE ONLY. ACTUAL PRODUCT MAY VARY DUE TO PRODUCT ENHANCEMENT



sales@sensortec-eu.com



www.sensortec-eu.com



Sydney House, 62 Lancaster Way, Ely,
Cambridgeshire, CB6 3NW, UK.